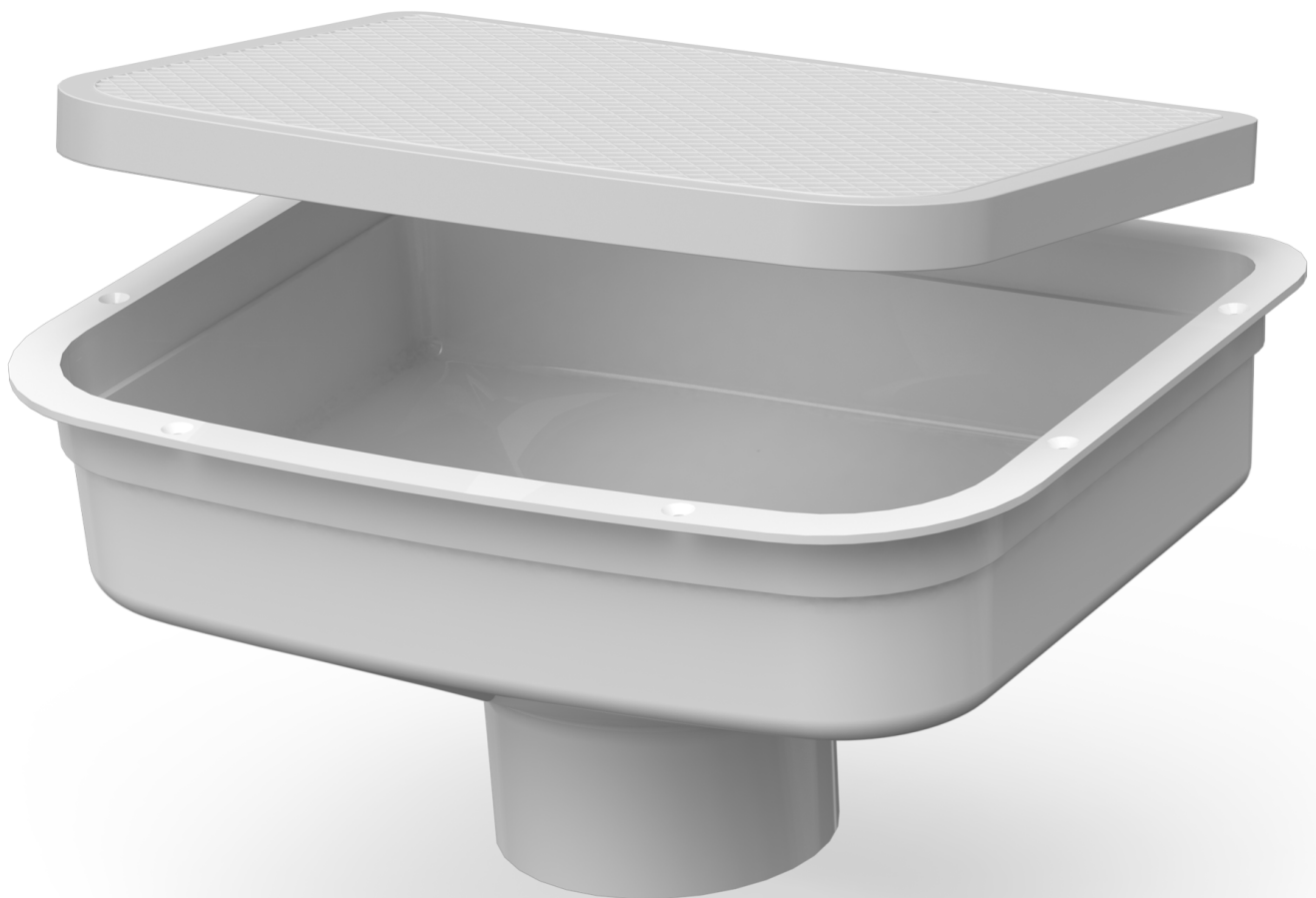


DELTA DRAIN MKIITM

INSTALLATION GUIDE



IMPORTANT INFORMATION

DELTA DRAIN™ INSTALLATION GUIDE

PLEASE READ CAREFULLY

THIS GUIDE

This document is a guide only and does not cover all unforeseen onsite circumstances. The information within this guide is designed to assist with the installation of the system.

A tradesman, builder or DIY'er must draw on trade skills/knowledge to overcome onsite challenges that are not covered within this document as not all variants of site preparation can be predicted/covered.

The installation of the system must comply with the requirements of the Australian plumbing code and must be completed by an individual with the relevant qualifications. Delta Drain MkII is suitable for use as a WC Fixture Waste Adaptor.

RECOMMENDATIONS

It is the responsibility of the builder, tradesman or user to ensure that all substrates and structures constructed/installed prior to installation of the NERO® Delta Drain MkII™ are compliant with the Australian Standards requirement, building codes and are constructed/installed in accordance to all manufacturers' recommendations.

SPECIFICATIONS

Product code: NRDDUNITCENTRED
Material code: DWV ABS
Outlet size: DN100

CERTIFICATIONS
NERO® Delta Drain design registered with IP Australia (no. 201315475).

Demtech Australia's quality management system is certified to ISO 9001 by SAI Global.



WARRANTY

The products and materials supplied by Demtech Australia Pty Ltd are covered under a factory product warranty. That is that the products themselves are supplied without manufacturing fault from factory.

Workmanship including installation and modification of any Demtech systems is not covered by Demtech as a manufacturer of the products. This warranty responsibility and obligation is held by the party completing the installation and or modification of the systems supplied. Demtech take no responsibility for workmanship or installation of these systems completed by third party persons.

For further information on our products, systems and services visit our website.

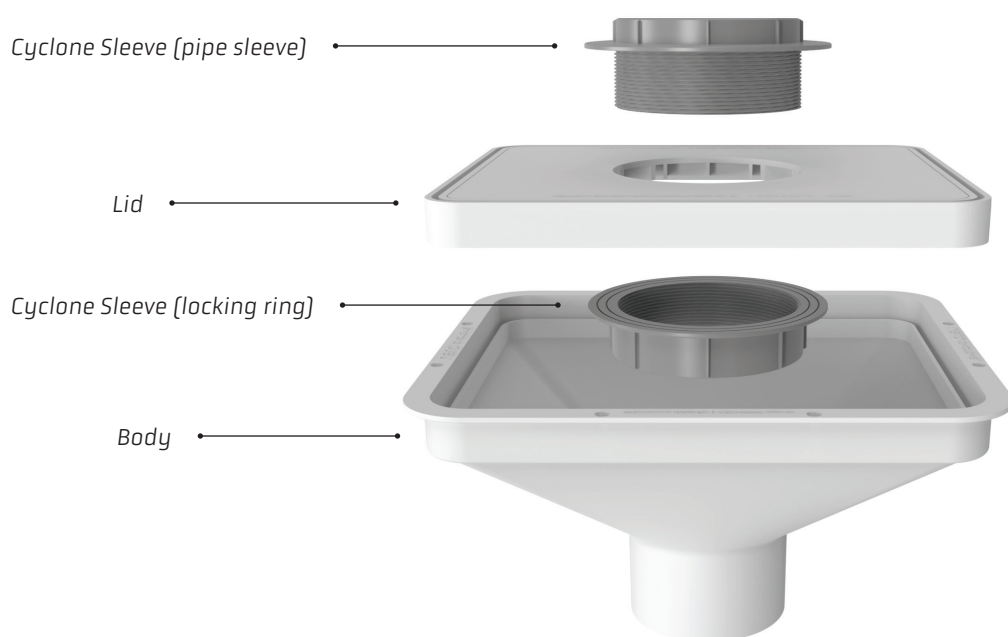
For full warranty information and to register your product please scan the QR code.

DISCLAIMER

All images in this guide are indicative and are intended as a representation of the actual products. Actual products true shape and form may vary from the representations within this guide.

USING CYCLONE SLEEVE?

Key installation instructions differ when using Cyclone Sleeve. If you are preparing your Delta Drain or Cyclone for use with Cyclone Sleeve, scan the QR code below to download Cyclone + Cyclone Sleeve Installation Guide.



BEFORE GETTING STARTED

Installation instructions differ depending on the type of subfloor present, follow only the appropriate set of instructions.

CONCRETE PG. 4

SUSPENDED PG. 6



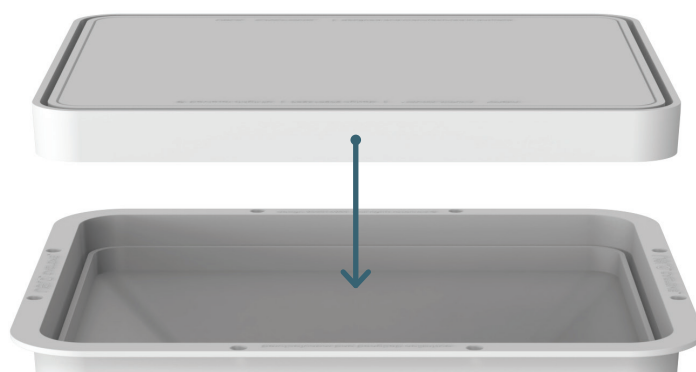
INSTALLATION STEPS

DELTA DRAIN™ INSTALLATION GUIDE CONCRETE SUBFLOOR APPLICATION

STEP 1

Fix the Delta Drain lid into the body using a plumbing primer and cement suitable for jointing ABS to ABS (AS3879 compliant).

Ensure the lid is pressed firmly in place and allow for adequate curing time as per plumbing primer and cement product instructions.

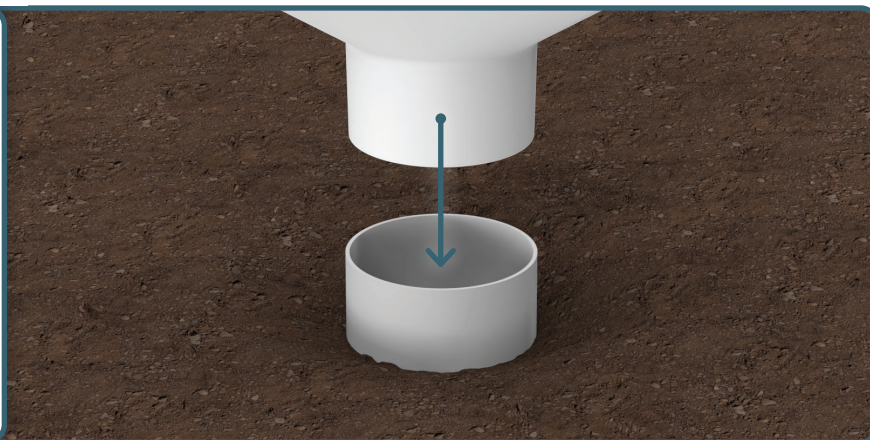


STEP 2

Prior to concrete slab pour, fix the Delta Drain into the drainage riser using a plumbing primer and cement suitable for jointing ABS to PVC (AS3879 compliant).

Ensure the Delta Drain is installed at the correct height, as per building plans, to sit flush with the surface of the concrete slab.

Allow for adequate curing time as per plumbing primer and cement product instructions.



STEP 3

Once the concrete slab pour is complete, check to ensure the Delta Drain has remained at the correct installation height and is within all tolerances.



✓ **GOOD**

The Delta Drain is both level and flush with the surface of the concrete slab. This is the ideal/targeted final outcome.



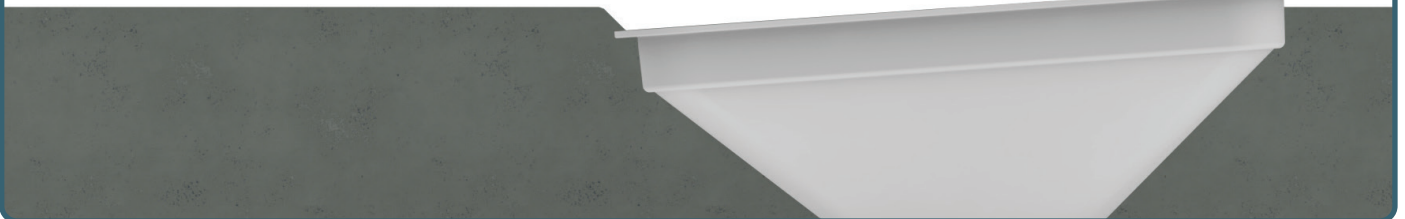
— **OKAY**

The Delta Drain is level but sits below the surface of the concrete slab (maximum 20mm below surface).



✗ **BAD**

The Delta Drain is out of level and protruding from the surface of the concrete slab. This will require rectification works.



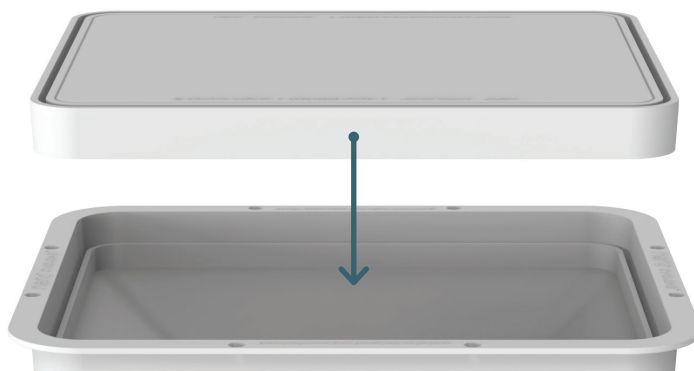
INSTALLATION STEPS

DELTA DRAIN™ INSTALLATION GUIDE SUSPENDED SUBFLOOR APPLICATION

STEP 1

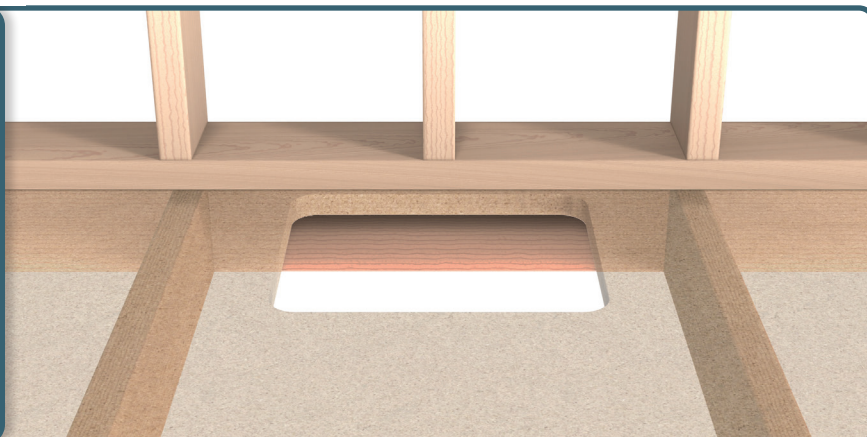
Fix the Delta Drain lid into the body using a plumbing primer and cement suitable for jointing ABS to ABS (AS3879 compliant).

Ensure the lid is pressed firmly in place and allow for adequate curing time as per plumbing primer and cement product instructions.



STEP 2

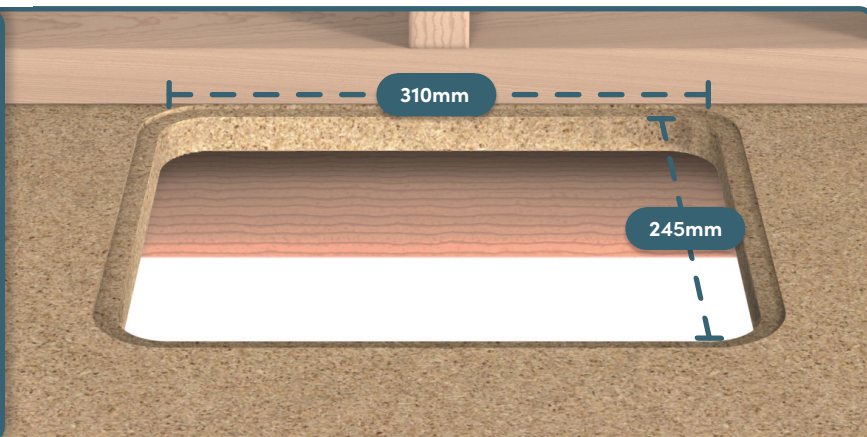
Create an opening in the substrate above the nominated position for the drainage system. Be sure to avoid all structural floor joists and beams as these should not be cut or modified in any way.



STEP 3

The opening in the substrate should measure 310mm by 245mm. Dry fit the Delta Drain and make any necessary adjustments to achieve a snug fit.

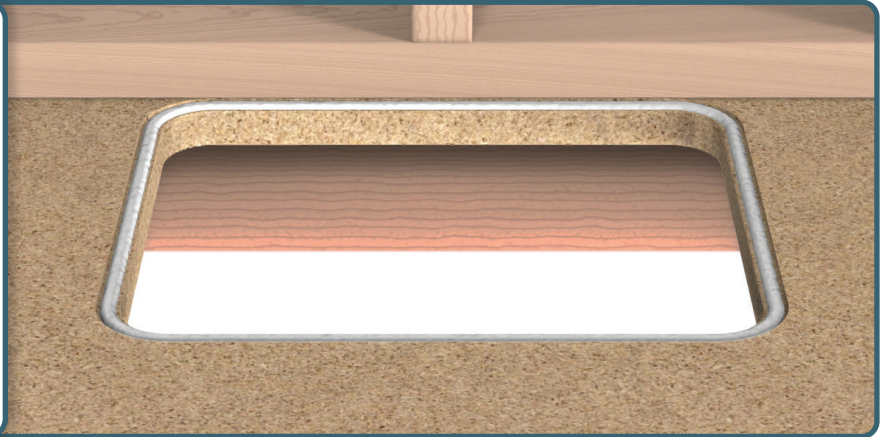
Use a router to create a recess around the opening measuring 12mm wide by 3mm deep. This will allow the Delta Drain to sit flush with the surface of the substrate.



STEP 4

Apply a continuous bead of sealant within the recess around the opening and install the Delta Drain into the substrate.

Press firmly around the fixing flange ensuring the Delta Drain is sitting flush and level with the substrate.



STEP 5

Using eight-gauge stainless steel self-tapping timber screws (suitable for counter sunk applications) mechanically fix the Delta Drain to the substrate.

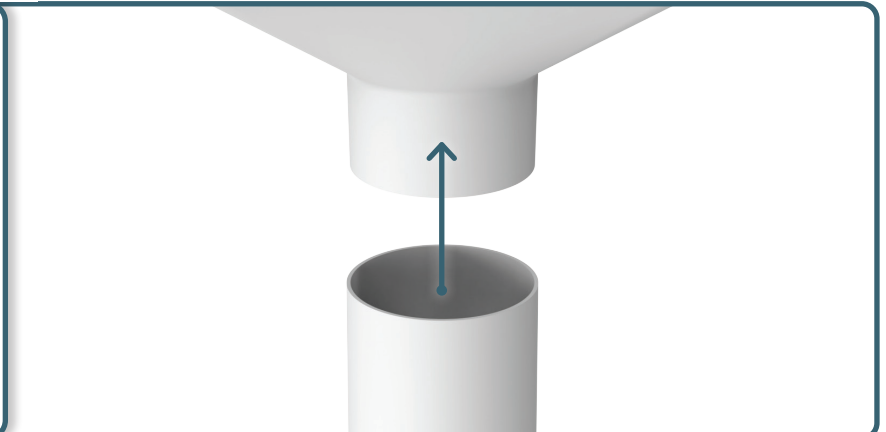
Be sure not to break through the counter sunk holes in the fixing flange. All sealant should be smoothed over and any excess should be discarded.



STEP 6

Connect the drainage system to the Delta Drain using a plumbing primer and cement suitable for jointing ABS to PVC (AS3879 compliant).

Allow for adequate curing time as per plumbing primer and cement product instructions.



DELTA DRAIN MkII[™]

INSTALLATION GUIDE

