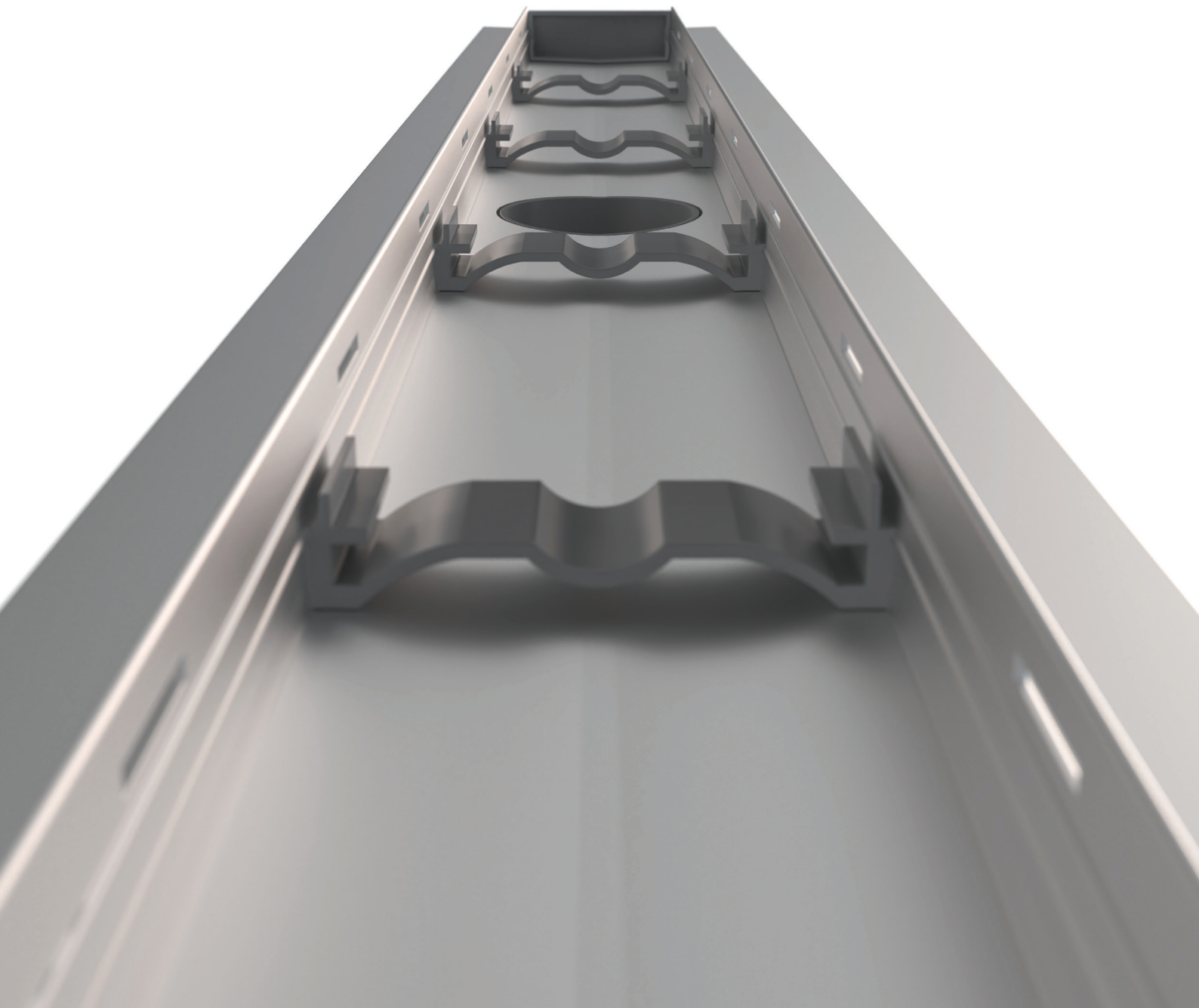


INSTALLATION GUIDE

65mm AQUAFLO® LINEAR GRATE



IMPORTANT INFORMATION

65mm AQUAFLO® LINEAR GRATE

PLEASE READ CAREFULLY

THIS GUIDE:

This document is a guide only and does not cover all unforeseen onsite circumstances. The information within this guide is designed to assist with the installation of the system.

A tradesman, builder or DIY'er must draw on trade skills/knowledge to overcome onsite challenges that are not covered within this document as not all variants of site preparation can be predicted/covered.

The installation of the system must comply with the requirements of the Australian plumbing code.

THE SYSTEM:

AQUAFLO® Linear Grates provide a sleek and sophisticated solution for water drainage. Manufactured from anodised aluminium, the clever system offers a seamless design for shower bases, bathrooms, balconies, roof-tops, gardens, path-ways and more.

The removable Cover Plate allows easy access for maintenance, while weep holes along the tile upstand ensure any water travelling underneath tiles can drain away freely. The appendable Pipe Outlet allows for variable outlet positioning along the length of the linear grate, giving you the freedom that other systems simply can't. The Height Adjusters clip into place within the Water Channel, holding the Cover Plate securely in place and stopping debris from entering the drain, while also ensuring water can flow uninterrupted to the outlet.

AQUAFLO® Linear Grates can be finished with a number of different Cover Plate options including, brushed aluminium, matte black, tile insert, Taipan and a number of laser cut stainless steel designs. AQUAFLO® Linear Grates are WaterMark certified and comply with Australian Standard requirements.



WMTS040
WMK26673

RECOMMENDATIONS:

Where required, AQUAFLO® Linear Grates, both internal and external, should be integrated with a full liquid-membrane waterproofing system. These waterproofing systems must meet the Australian Standards 'AS3740 for internal and AS4654 for external. It is the responsibility of the builder, tradesman or user to ensure that all substrates and structures constructed/installed prior to installation of the AQUAFLO® Linear Grate system are compliant with the Australian Standards requirement, building codes and are constructed/installed in accordance to all manufacturers' recommendations.

Installation of the AQUAFLO® kit must take place prior to preparing screed for the shower base. Once complete, the AQUAFLO® kit can be lifted out of the substrate and screed can be laid. A layer of separation must be present between the AQUAFLO® kit and the screed i.e. adhesive/sealant or waterproof membrane. The AQUAFLO® kit must not come in direct contact with the concrete substrate.

WARRANTY:

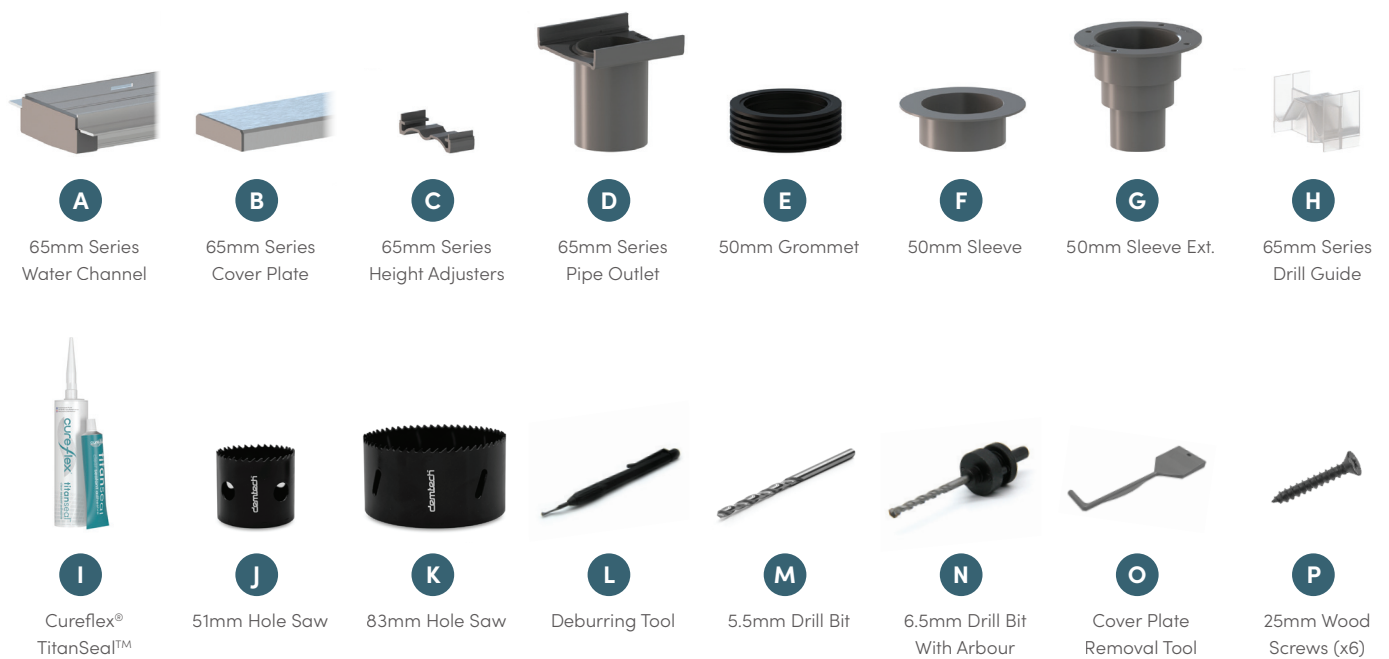
The products and materials supplied by Demtech Australia Pty Ltd are covered under a factory product warranty. That is that the products themselves are supplied without manufacturing fault from factory. Workmanship including installation and modification of any Demtech systems is not covered by Demtech as a manufacturer of the products. This warranty responsibility and obligation is held by the party completing the installation and or modification of the systems supplied. Demtech take no responsibility for workmanship or installation of these systems completed by third party persons.

For further information on our products, systems and services visit our website.

For full warranty information and to register your product please scan the QR code.

COMPONENTS & TOOLS:

Your Aquaflo® kit will contain each of the following components and tools, be sure to familiarise yourself before getting started.



BEFORE GETTING STARTED:

Installation instructions differ depending on the type of subfloor present, follow only the appropriate set of instructions.

CONCRETE: PGS 04-11

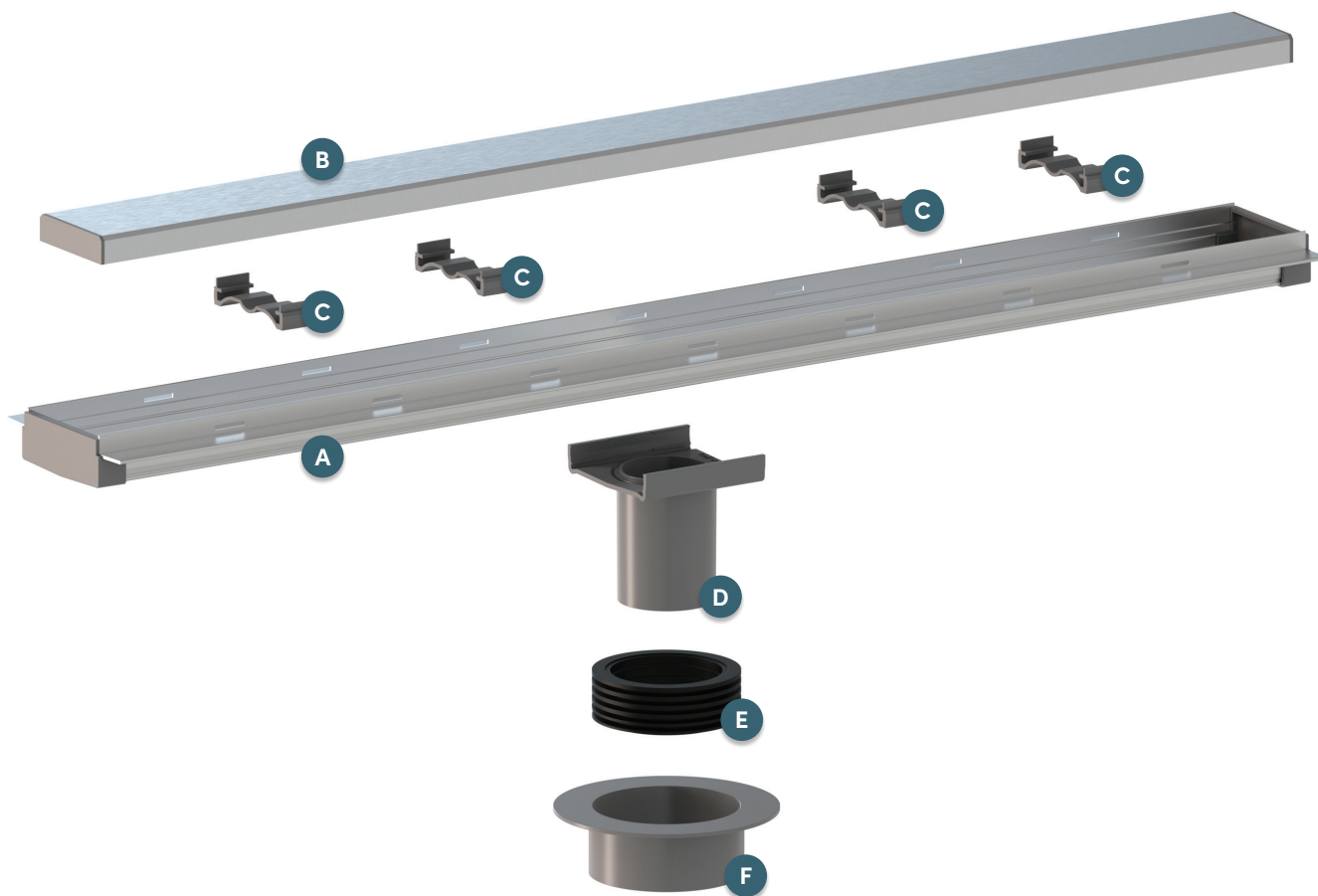
SUSPENDED: PGS 12-19



CONCRETE SUBFLOOR

65mm AQUAFLO® LINEAR GRATE

PLEASE READ CAREFULLY



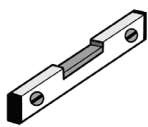
ADDITIONAL TOOLS REQUIRED:

Make sure you have these items handy during the installation process.



1

Power Drill



2

Spirit Level



3

Pencil/Marker



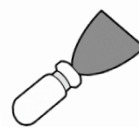
4

Punch Tool



5

Hammer

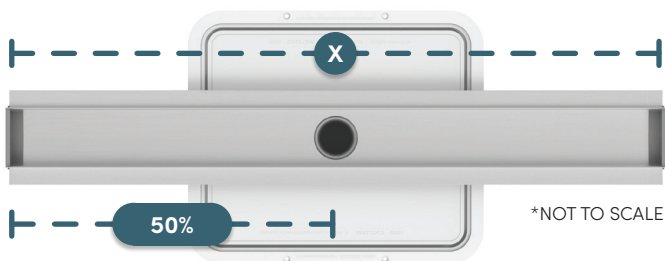


6

Spatula

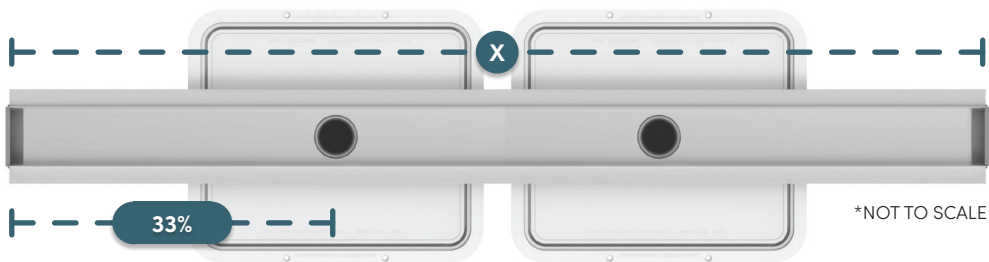
750mm to 1250mm

It is recommended that AQUAFLO® kits between 750mm and 1250mm use 1 Pipe Outlet. The Pipe Outlet must be installed into a fixture connector adaptor (FCA) as per this installation guide.



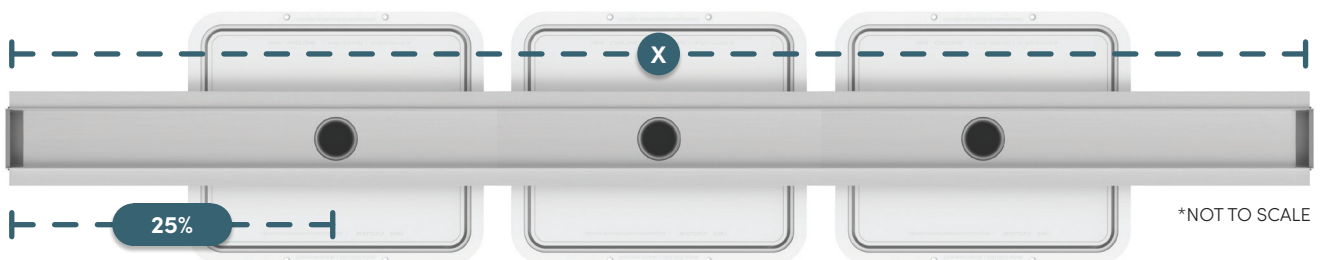
1350mm to 1850mm

It is recommended that AQUAFLO® kits between 1350mm and 1850mm use 2 Pipe Outlets. Each of the Pipe Outlets must be installed into a FCA. Simply repeat the installation steps as necessary.



1950mm to 2150mm

It is recommended that AQUAFLO® kits between 1950mm and 2150mm use 3 Pipe Outlets. Each of the Pipe Outlets must be installed into a FCA. Simply repeat the installation steps as necessary.



INSTALLATION STEPS

65mm AQUAFLO® LINEAR GRATE CONCRETE SUBFLOOR APPLICATION

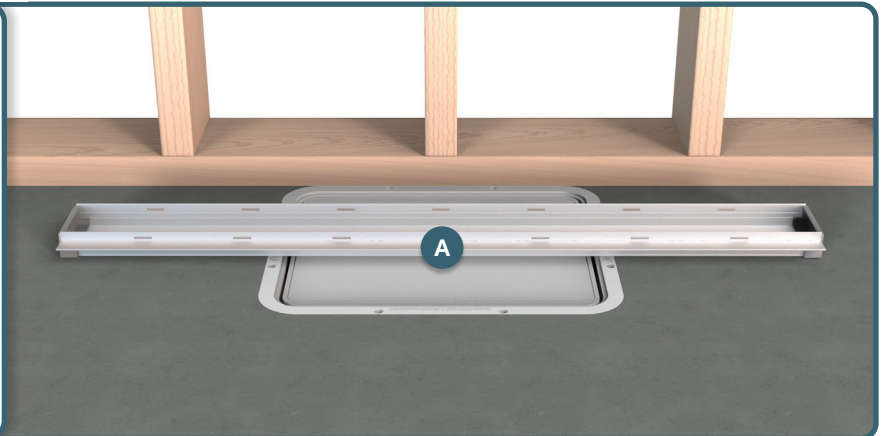
01.

Prior to starting any works, please ensure:

- the concrete subfloor is level.
- the area is clear of any debris.
- the surface is clean and dry.

Additionally, ensure the fixture connector adaptor (FCA) is not protruding from or sitting more than 20mm below the slab.

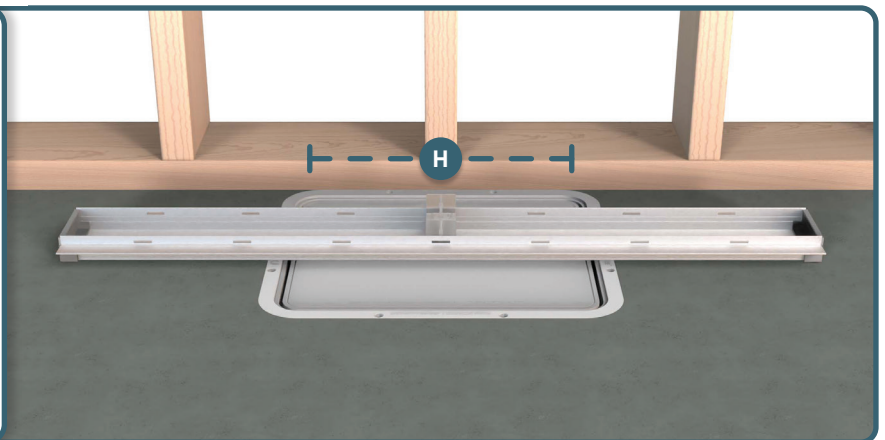
Place the Water Channel **A** in the desired final position over the top of the FCA.



02.

While the Water Channel does not need to be centered over the FCA, this is the preferred/recommended placement.

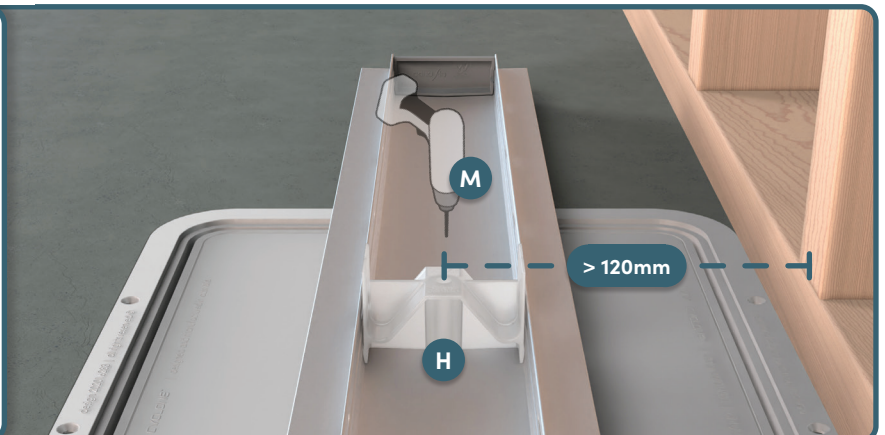
Snap the Drill Guide **H** within the Water Channel and slide into position, also preferably centered over the FCA.



03.

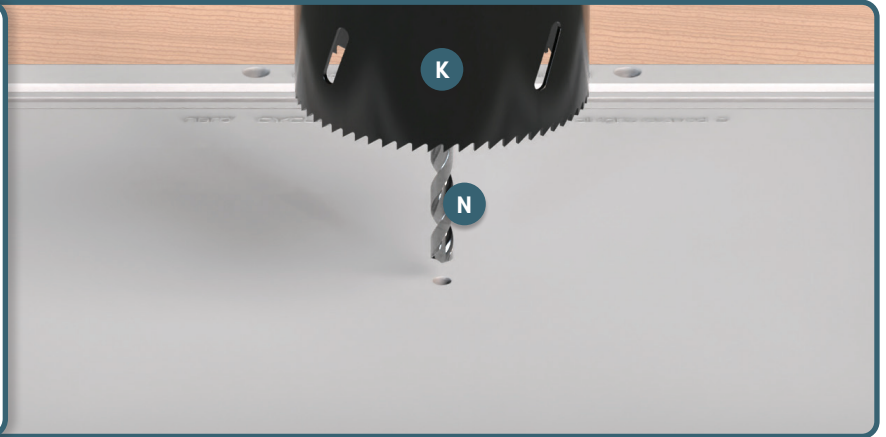
It is recommended that the centre of the Water Channel sits at least 120mm from the stud frame to allow for tiling.

Using the 5.5mm Drill Bit **M**, drill a pilot hole through both the Water Channel and the plastic lid of the FCA below.



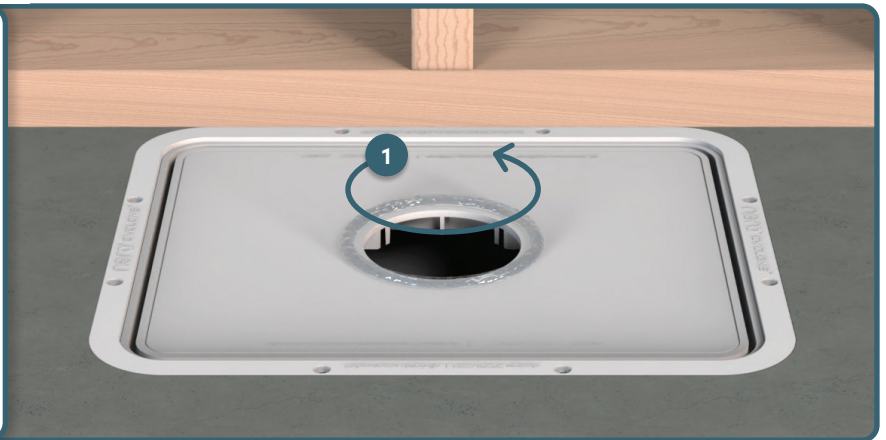
04.

Using the 83mm Hole Saw **K** and 6.5mm Arbour Drill Bit **N**, drill a hole through the plastic lid of the FCA using the pilot hole from *STEP 03* as a guide.



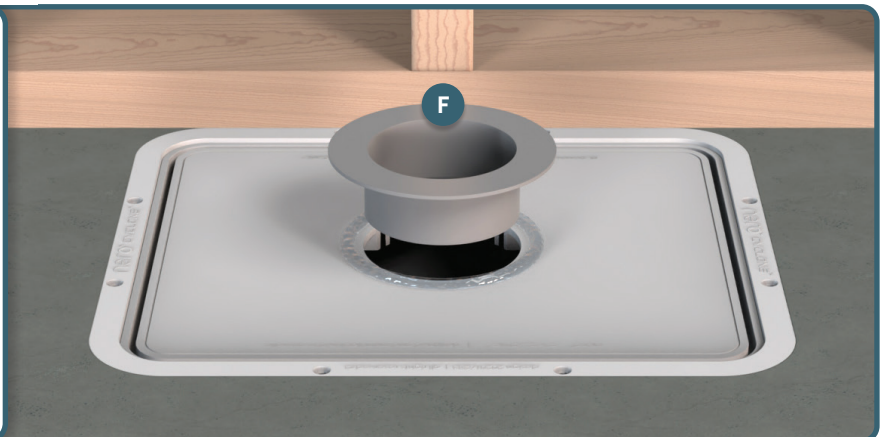
05.

Apply one continuous bead of Cureflex® TitanSeal™ **I** around the hole in the plastic lid of the FCA, as depicted.



06.

Install the 50mm Sleeve **F** into the hole and press firmly around the top flange. Wipe away any excess sealant.



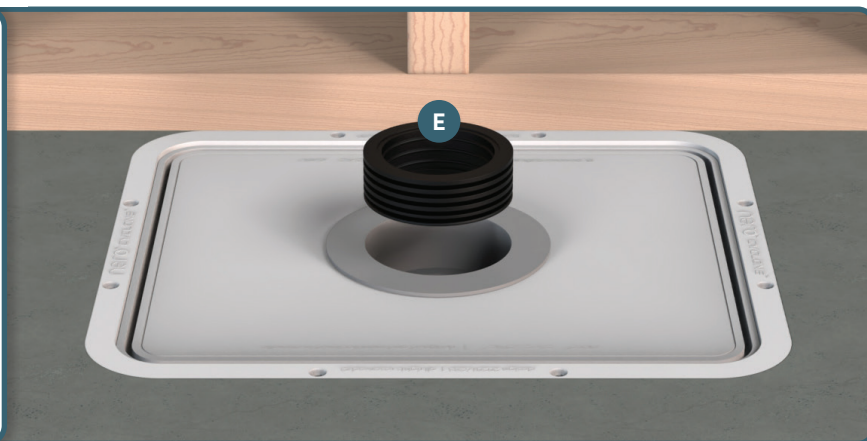
INSTALLATION STEPS

65mm AQUAFLO® LINEAR GRATE
CONCRETE SUBFLOOR APPLICATION

07.

Install the 50mm Grommet **E** into the 50mm Sleeve and press firmly in place.

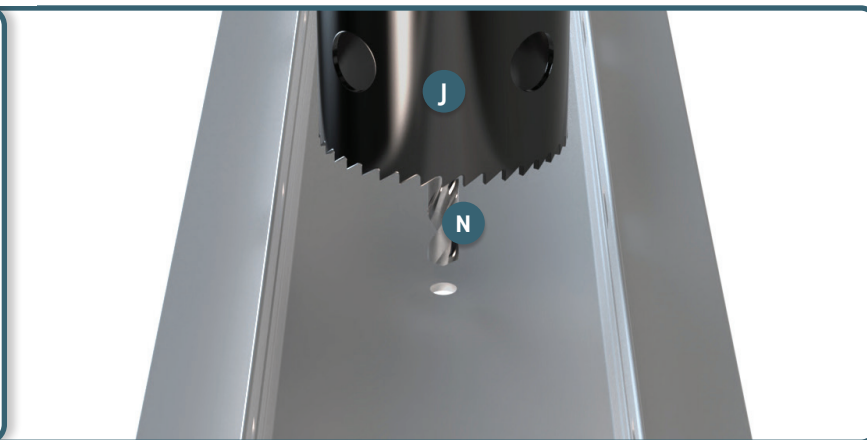
Ensure the top surface is facing up and the bottom surface is resting on the inner flange of the 50mm Sleeve.



08.

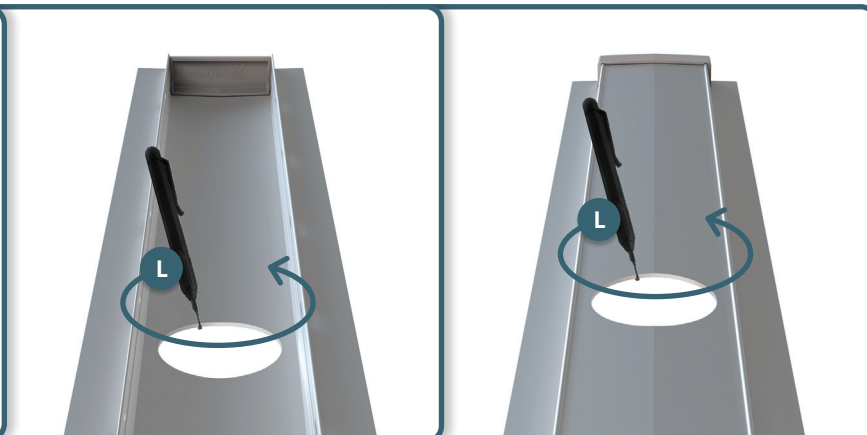
Place the Water Channel over the top of a sacrificial board (to prevent damage to the surface underneath).

Using the 51mm Hole Saw **J** and 6.5mm Arbour Drill Bit **N**, drill a hole in the valley of the Water Channel using the pilot hole from *STEP 03* as a guide.



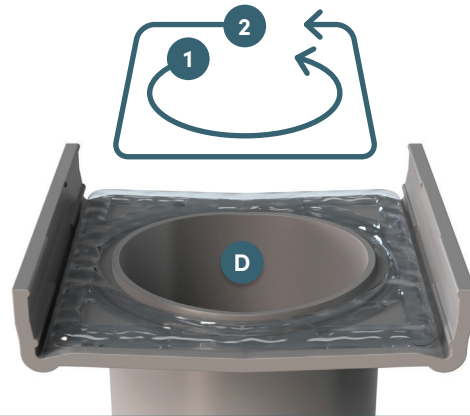
09.

Using the Deburring Tool **L**, smooth off the rough edges left around the hole. Repeat on the underside as well.



10.

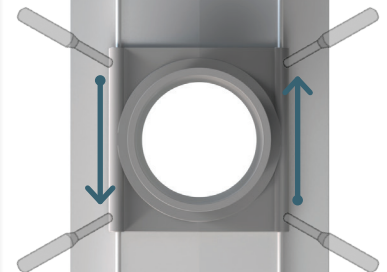
Apply two continuous beads of Cureflex® TitanSeal™ ① on top of the Pipe Outlet ②. One in a circular shape and the other in a square shape, as depicted.



11.

Align the Pipe Outlet ① in place over the hole in the underside of the Water Channel and press into position.

Use a punch tool and hammer on the outer edges of the Pipe Outlet to ensure a secure and precise connection.



12.

When performed correctly, the components will click together and become locked in place.

Ensure both sides of the Pipe Outlet are locked onto the Water Channel before proceeding to the next step.

Wipe away any excess sealant.



INSTALLATION STEPS

65mm AQUAFLO® LINEAR GRATE CONCRETE SUBFLOOR APPLICATION

13.

Align the Pipe Outlet over the 50mm Sleeve/Grommet and push down on the Water Channel, sliding the kit into place.

The kit can be raised up by a maximum distance of 30mm, where depicted, to achieve the desired final height.

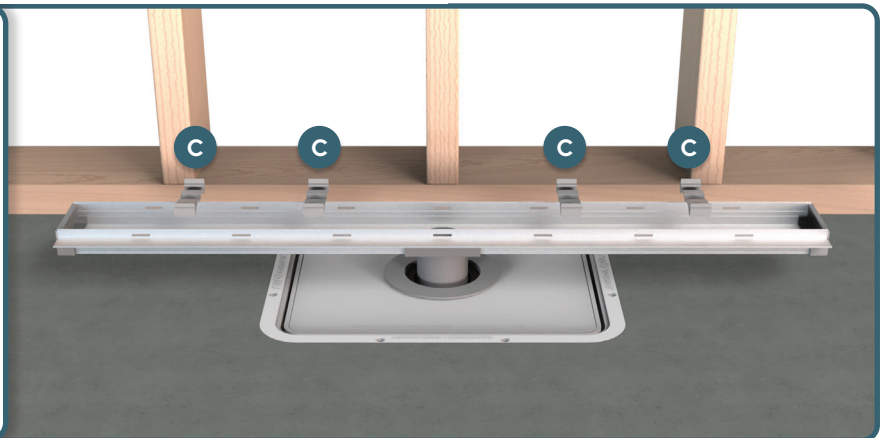
NOTE: Please see disclaimer (pg. 2) for more information regarding installing the AQUAFLO® kit into screed.



14.

Snap the Height Adjusters **C** within the Water Channel ensuring they are spaced apart as evenly as possible.

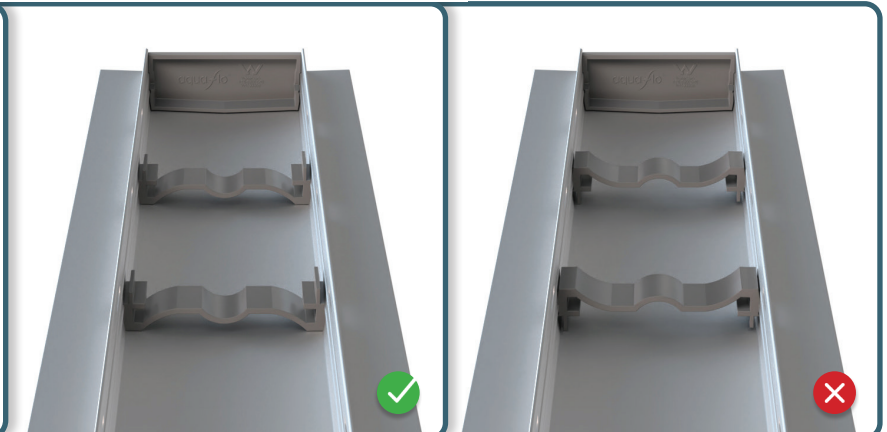
Avoid placing the Height Adjusters too close to, or over the top of, the Pipe Outlet. Adjust their position by sliding left or right.



15.

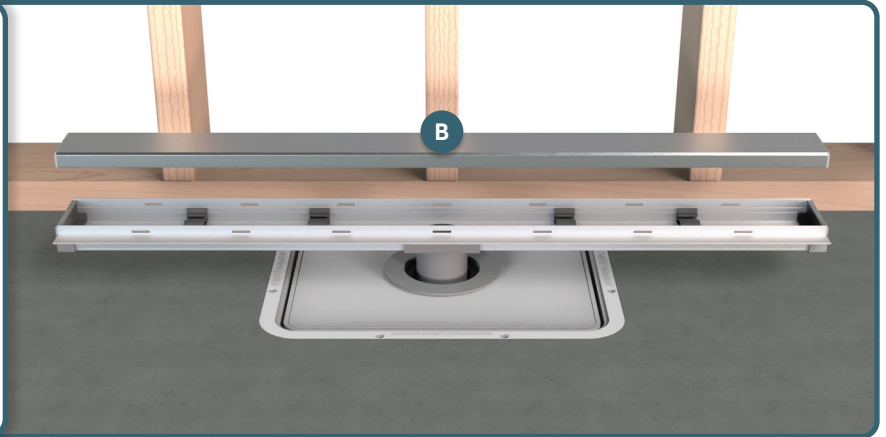
Confirm all of the Height Adjusters are installed the right way up. They will not snap into place if upside down.

The Cover Plate will also not sit correctly or securely if the Height Adjusters are installed upside down.



16.

Align and place the Cover Plate **B** within the Water Channel by sitting it on top of the Height Adjusters.



17.

The Cover Plate can be installed in 2 ways:

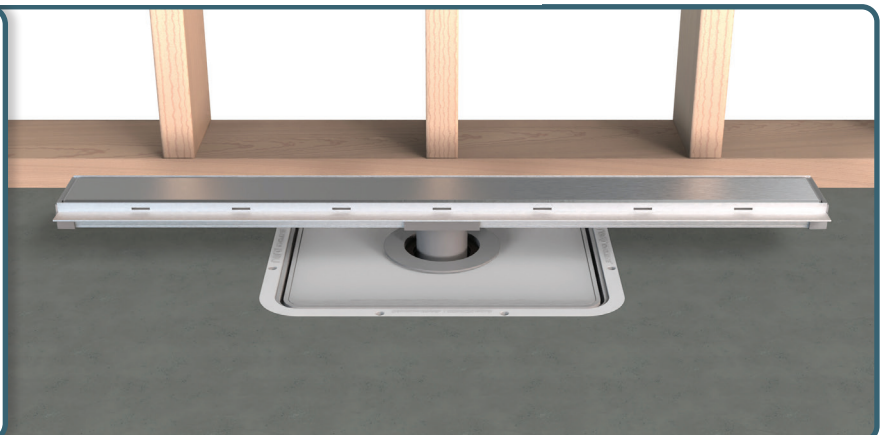
- 1 Brushed finish facing up.
- 2 Brushed finish facing down and tiles installed within to match the surroundings of the kit.



18.

The installation is now complete!

Ensure sealant is fully cured before use.



SUSPENDED SUBFLOOR

65mm AQUAFLO® LINEAR GRATE

PLEASE READ CAREFULLY



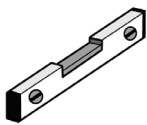
ADDITIONAL TOOLS REQUIRED:

Make sure you have these items handy during the installation process.



1

Power Drill



2

Spirit Level



3

Pencil/Marker



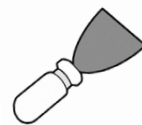
4

Punch Tool



5

Hammer

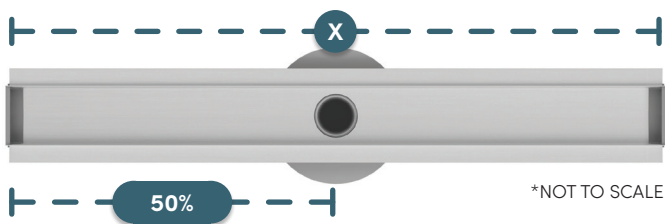


6

Spatula

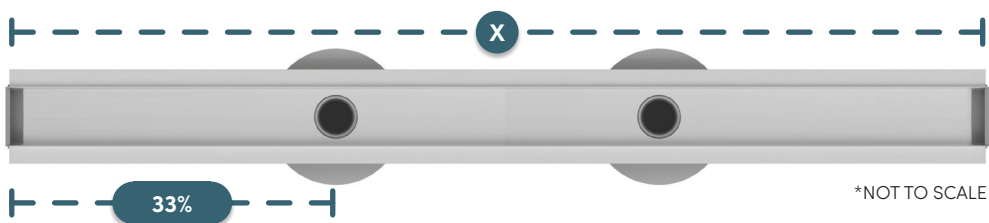
750mm to 1250mm

It is recommended that AQUAFLO® kits between 750mm and 1250mm use 1 Pipe Outlet. The Pipe Outlet must be installed into a 50mm Sleeve Ext. as per this installation guide.



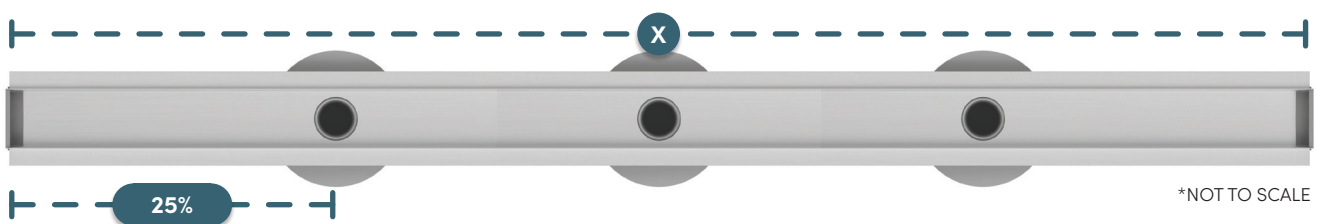
1350mm to 1850mm

It is recommended that AQUAFLO® kits between 1350mm and 1850mm use 2 Pipe Outlets. Each of the Pipe Outlets must be installed into a 50mm Sleeve Ext. Simply repeat the installation steps as necessary.



1950mm to 2150mm

It is recommended that AQUAFLO® kits between 1950mm and 2150mm use 3 Pipe Outlets. Each of the Pipe Outlets must be installed into a 50mm Sleeve Ext. Simply repeat the installation steps as necessary.



INSTALLATION STEPS

65mm AQUAFLO® LINEAR GRATE SUSPENDED SUBFLOOR APPLICATION

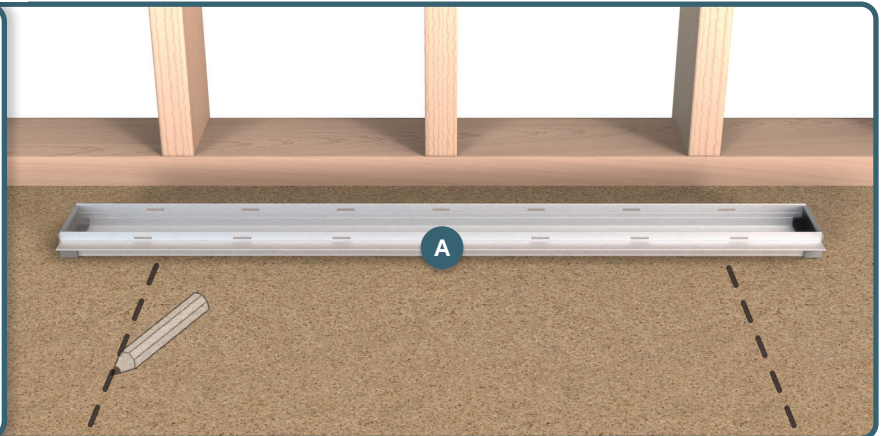
01.

Prior to starting any works, please ensure:

- the suspended subfloor is level.
- the area is clear of any debris.
- the surface is clean and dry.

Place the Water Channel **A** in the desired final position over the suspended subfloor.

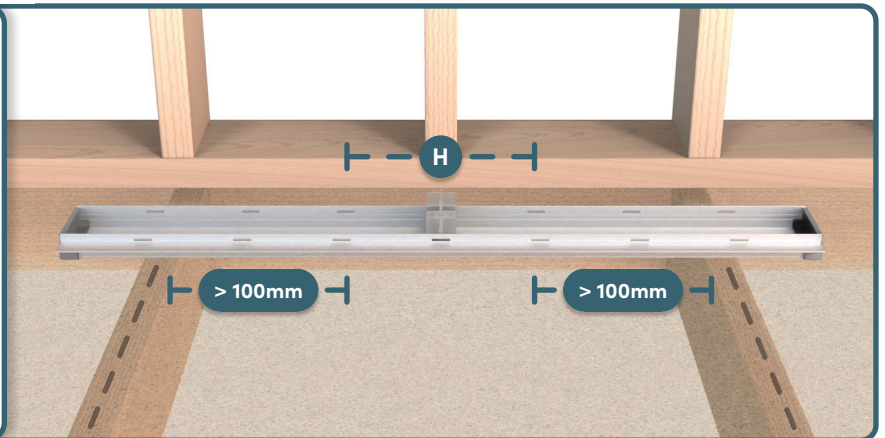
It is important to be aware of the position of floor joists underneath. Mark their position using a pencil/marker.



02.

Snap the Drill Guide **H** within the Water Channel and slide into position. While it does not need to be centered, this is the preferred/recommended placement.

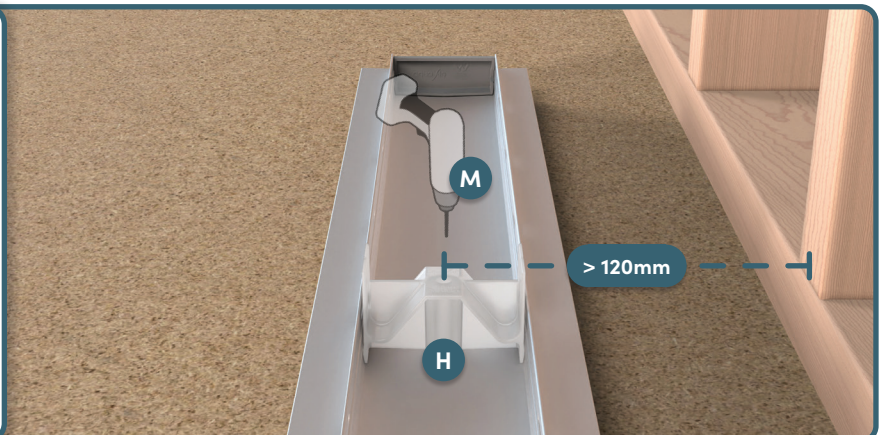
Measure the distance between the Drill Guide and the floor joist markings. A minimum distance of 100mm is recommended to allow for plumbing to be connected underneath.



03.

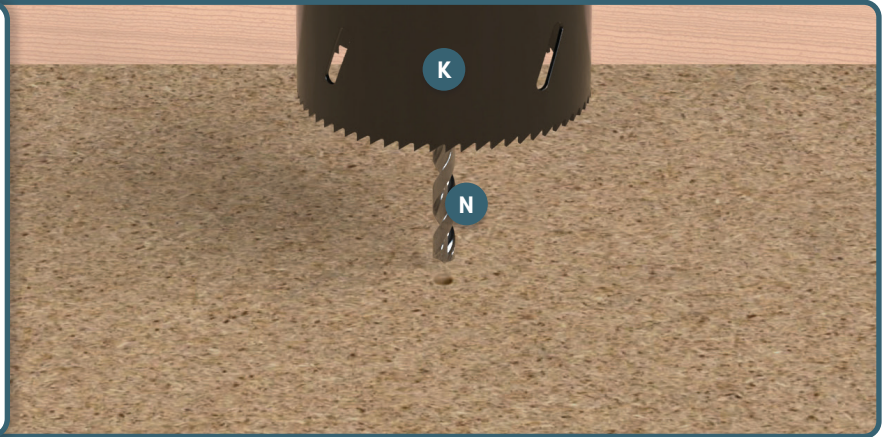
It is recommended that the centre of the Water Channel sits at least 120mm from the stud frame to allow for tiling.

Using the 5.5mm Drill Bit **M**, drill a pilot hole through both the Water Channel and the suspended subfloor below.



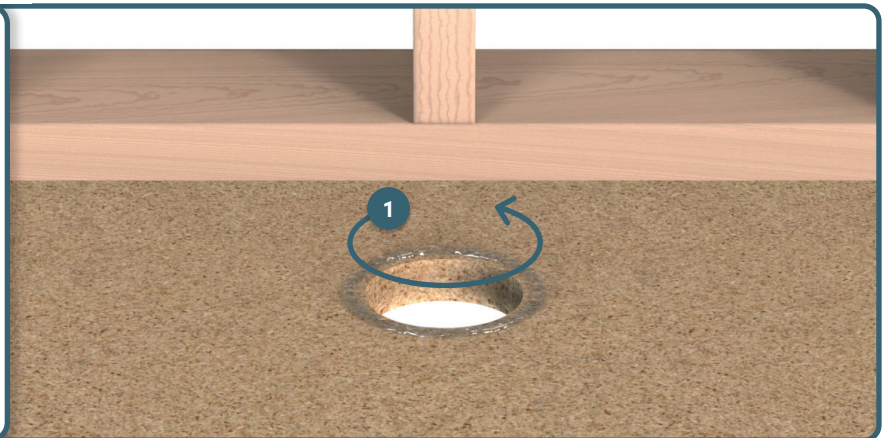
04.

Using the 83mm Hole Saw **K** and 6.5mm Arbour Drill Bit **N**, drill a hole through the suspended subfloor using the pilot hole from *STEP 03* as a guide.



05.

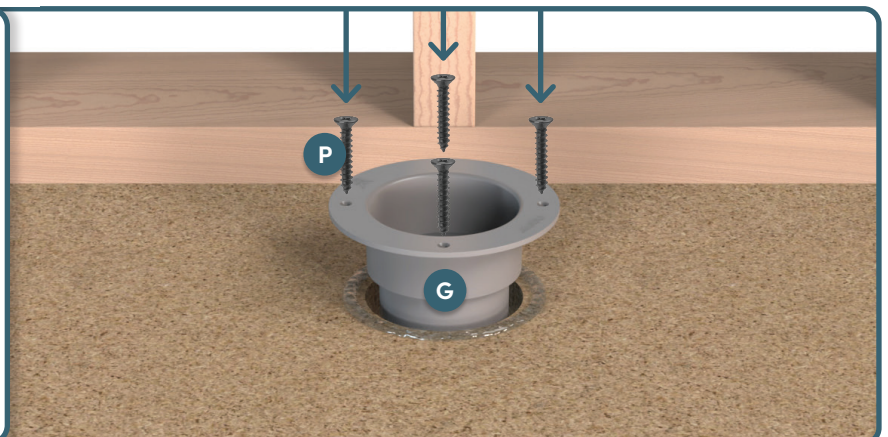
Apply one continuous bead of Cureflex® TitanSeal™ **I** around the hole in the suspended subfloor, as depicted.



06.

Install the 50mm Sleeve Ext. **G** into the hole and press firmly around the top flange. Wipe away any excess sealant.

Secure the 50mm Sleeve Ext. to the suspended subfloor using the included 25mm Wood Screws **P**.



INSTALLATION STEPS

65mm AQUAFLO® LINEAR GRATE
SUSPENDED SUBFLOOR APPLICATION

07.

Install the 50mm Grommet **E** into the 50mm Sleeve Ext. and press firmly in place.

Ensure the top surface is facing up and the bottom surface is resting on the inner flange of the 50mm Sleeve Ext.



08.

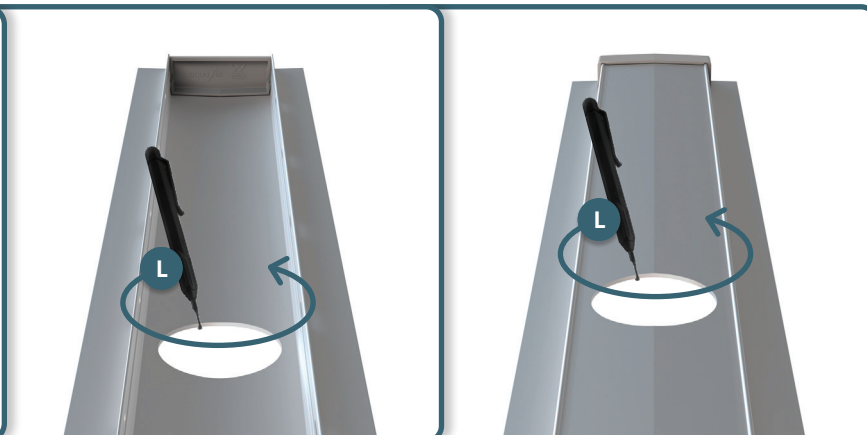
Place the Water Channel over the top of a sacrificial board (to prevent damage to the surface underneath).

Using the 51mm Hole Saw **J** and 6.5mm Arbour Drill Bit **N**, drill a hole in the valley of the Water Channel using the pilot hole from *STEP 03* as a guide.



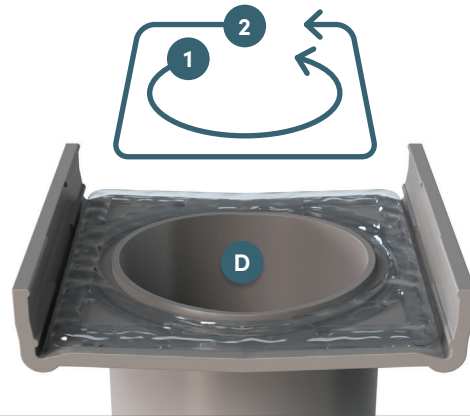
09.

Using the Deburring Tool **L**, smooth off the rough edges left around the hole. Repeat on the underside as well.



10.

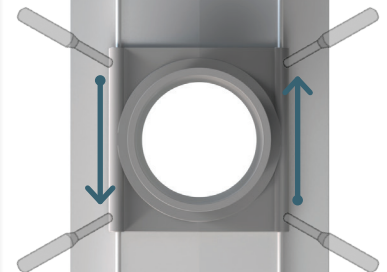
Apply two continuous beads of Cureflex® TitanSeal™ ① on top of the Pipe Outlet ②. One in a circular shape and the other in a square shape, as depicted.



11.

Align the Pipe Outlet ② in place over the hole in the underside of the Water Channel and press into position.

Use a punch tool and hammer on the outer edges of the Pipe Outlet to ensure a secure and precise connection.



12.

When performed correctly, the components will click together and become locked in place.

Ensure both sides of the Pipe Outlet are locked onto the Water Channel before proceeding to the next step.

Wipe away any excess sealant.



INSTALLATION STEPS

65mm AQUAFLO® LINEAR GRATE SUSPENDED SUBFLOOR APPLICATION

13.

Align the Pipe Outlet over the 50mm Sleeve Ext./Grommet and push down on the Water Channel, sliding the kit into place.

The kit can be raised up by a maximum distance of 30mm, where depicted, to achieve the desired final height.

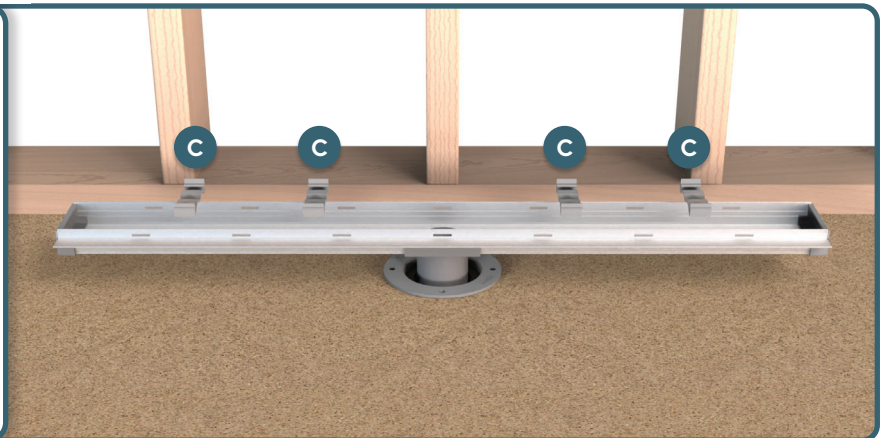
NOTE: Please see disclaimer (pg. 2) for more information regarding installing the AQUAFLO® kit into screed.



14.

Snap the Height Adjusters **C** within the Water Channel ensuring they are spaced apart as evenly as possible.

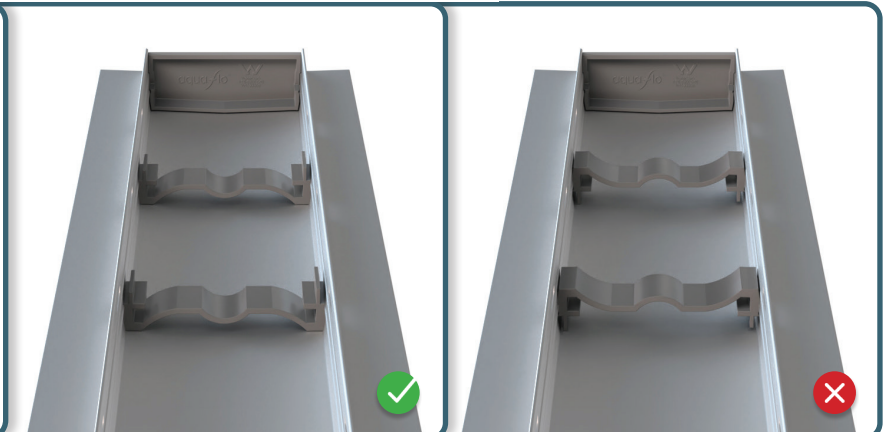
Avoid placing the Height Adjusters too closely or over the top of the Pipe Outlet. Adjust their position by sliding left or right.



15.

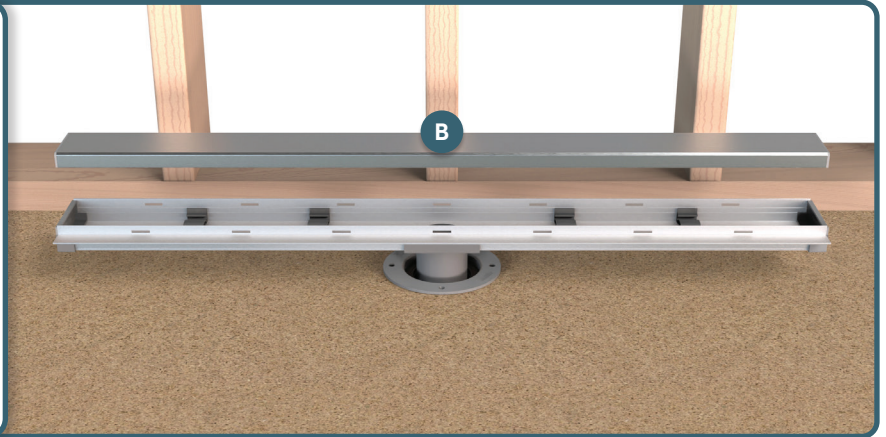
Confirm all of the Height Adjusters are installed the right way up. They will not snap into place if upside down.

The Cover Plate will also not sit correctly or securely if the Height Adjusters are installed upside down.



16.

Align and place the Cover Plate **B** within the Water Channel by sitting it on top of the Height Adjusters.



17.

The Cover Plate can be installed in 2 ways:

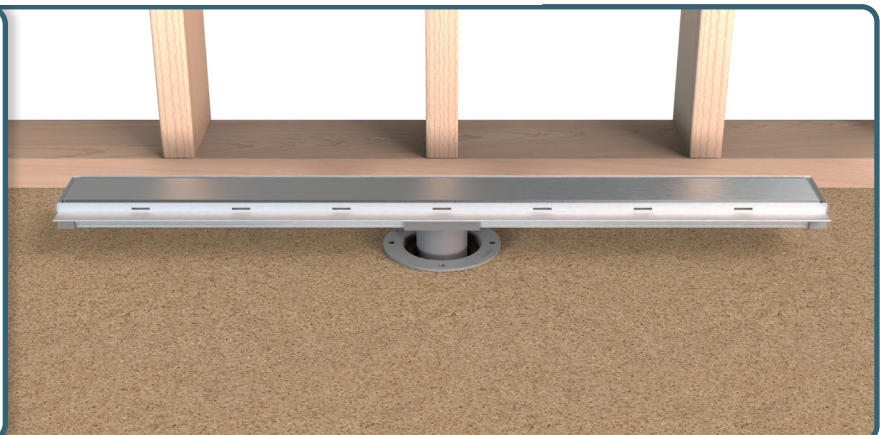
- 1 Brushed finish facing up.
- 2 Brushed finish facing down and tiles installed within to match the surroundings of the kit.



18.

The installation is now complete!

Ensure sealant is fully cured before use.



INSTALLATION GUIDE

65mm AQUAFLO[®] LINEAR GRATE

