

CYCLONE™ INSTALLATION GUIDE

IMPORTANT INFORMATION

CYCLONE INSTALLATION GUIDE

PLEASE READ CAREFULLY

THIS GUIDE

This document is a guide only and does not cover all unforeseen on-site circumstances. The information within this guide is designed to assist with the installation of the system.

A tradesman, builder or DIY'er must draw on trade skills/knowledge to overcome on-site challenges that are not covered within this document as not all variants of site preparation can be predicted/covered.

The installation of the system must comply with the requirements of the Australian plumbing code and must be completed by an individual with the relevant qualifications.

RECOMMENDATIONS

It is the responsibility of the builder, tradesman or user to ensure that all substrates and structures constructed/installed prior to installation of the NERO® Cyclone are compliant with the Australian Standards requirement, building codes and are constructed/installed in accordance to all manufacturers' recommendations.

SPECIFICATIONS

Product code: NRCYCLONE

Material code: DWV ABS

Outlet size: DN100

Waterway area: 9,500mm²

Max. internal pressure (air): 120kPa

Max. water temperature: 80°C

CERTIFICATIONS

NERO® Cyclone design registered with IP Australia (no. 202016283).

NERO® Cyclone Sleeve design registered with IP Australia (no. 202016283).

Demtech Australia's quality management system is certified to ISO 9001 by SAI Global.

* Cyclone tested (in conjunction with Cyclone Sleeve) and certified to:



**Cyclone Sleeve tested (as a stand-alone product/accessory) and certified to:



Cyclone Sleeve available separately for use with other compatible fixture connector adaptors.

WARRANTY

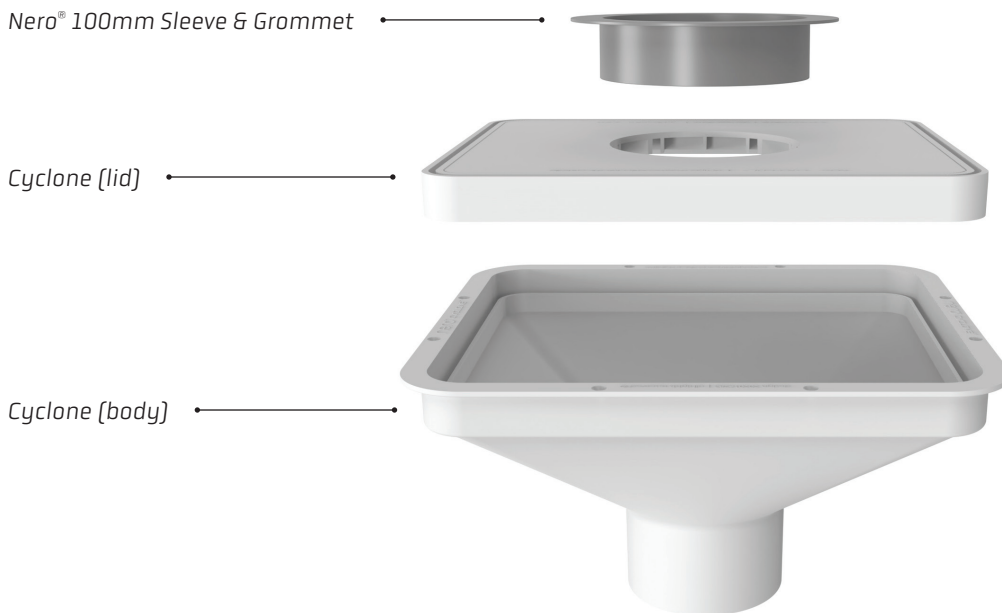
The products and materials supplied by Demtech Australia Pty Ltd are covered under a factory product warranty. That is that the products themselves are supplied without manufacturing fault from factory. Workmanship including installation and modification of any Demtech systems is not covered by Demtech as a manufacturer of the products. This warranty responsibility and obligation is held by the party completing the installation and or modification of the systems supplied. Demtech take no responsibility for workmanship or installation of these systems completed by third party persons.

For further information on our products, systems and services visit our website.

For full warranty information and to register your product please scan the QR code.

NOT USING CYCLONE SLEEVE?

Key installation instructions differ when using Cyclone Sleeve**. If you are preparing your Cyclone for use with accessories other than Cyclone Sleeve, such as Nero® 100mm Sleeve & Grommet, scan the QR code below to download Cyclone Installation Guide.



BEFORE GETTING STARTED

Installation instructions differ depending on the type of subfloor present, follow only the appropriate set of instructions.

CONCRETE PG. 4

SUSPENDED PG. 6



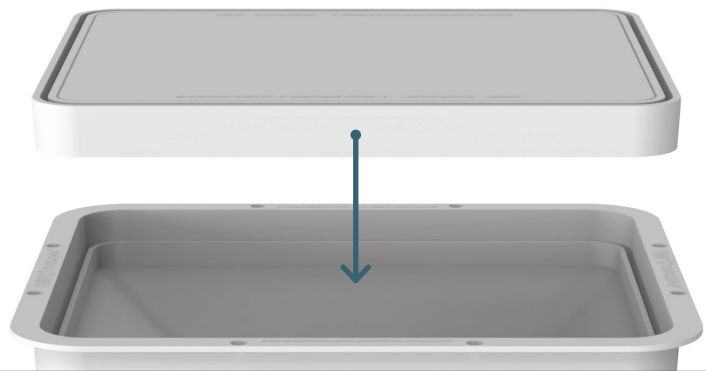
INSTALLATION STEPS

CYCLONE INSTALLATION GUIDE CONCRETE SUBFLOOR APPLICATION

STEP 1

Place the Cyclone lid into the body.
DO NOT permanently fix using plumbing primer and cement.

The lid will need to be removed later for installation of the Cyclone Sleeve. Placing the lid into the body now will prevent warping during concrete slab pour.

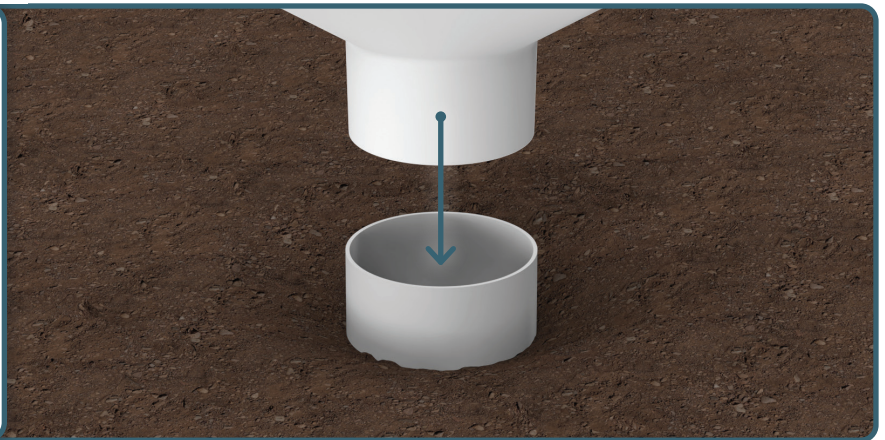


STEP 2

Prior to concrete slab pour, fix the Cyclone into the drainage riser using a plumbing primer and cement suitable for jointing ABS to PVC (AS3879 compliant).

Ensure the Cyclone is installed at the correct height, as per building plans, to sit flush with the surface of the concrete slab.

Allow for adequate curing time as per plumbing primer and cement product instructions.



STEP 3

Once the concrete slab pour is complete, check to ensure the Cyclone has remained at the correct installation height and is within all tolerances.



✓ **GOOD**

The Cyclone is both level and flush with the surface of the concrete slab. This is the ideal/targeted final outcome.



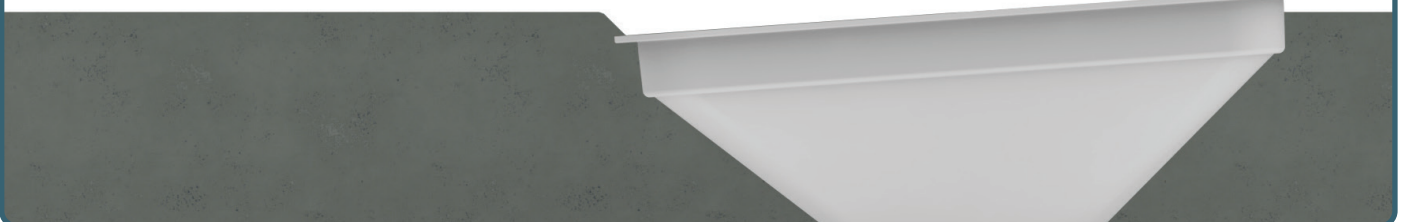
⊖ **OKAY**

The Cyclone is level but sits below the surface of the concrete slab (maximum 20mm below surface).



✗ **BAD**

The Cyclone is out of level and protruding from the surface of the concrete slab. This will require rectification works.



INSTALLATION STEPS

CYCLONE INSTALLATION GUIDE
CONCRETE SUBFLOOR APPLICATION

STEP 4

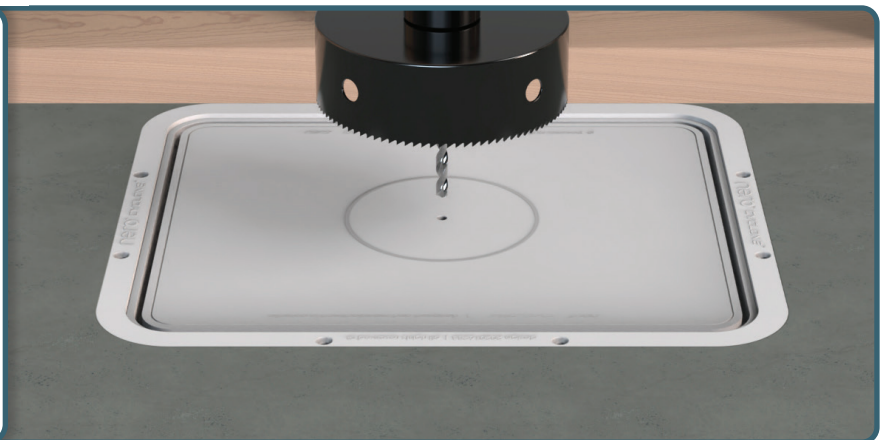
Mark where the connection is required on the lid and drill a pilot hole using a 5.5mm drill bit in the centre of the marking.



STEP 5

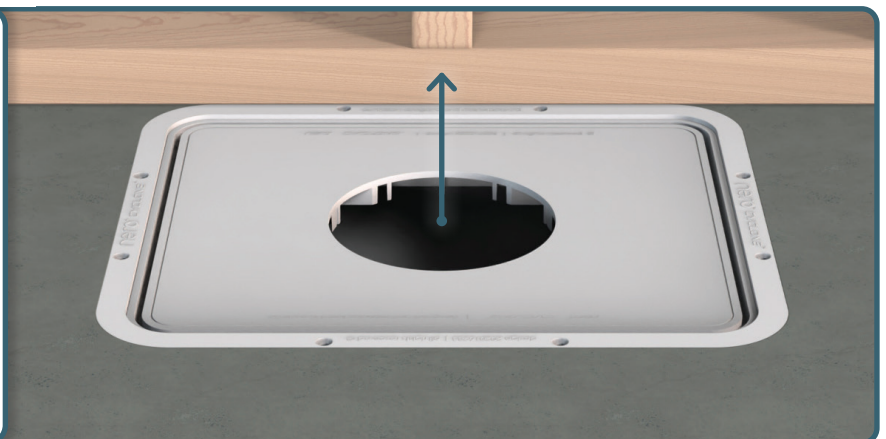
Use a 133mm hole saw to make an opening in the lid. Take care not to drop the lid cut-out into the Cyclone.

Use a deburring tool to clean the rough edges around the opening in the lid.



STEP 6

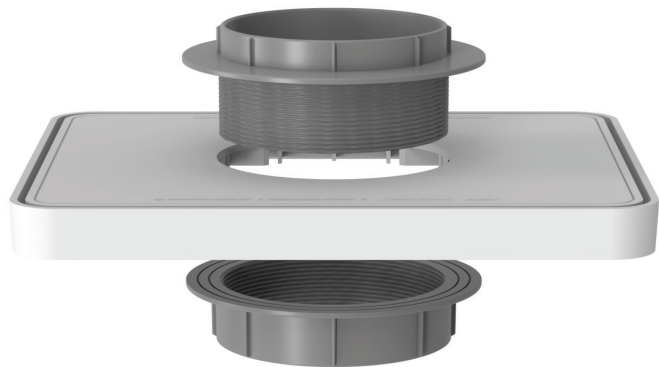
Lift the lid out of the body of the Cyclone. Carefully reach through and apply force around the opening until the lid is free.



STEP 7

The Cyclone Sleeve is designed with an internal taper and stop-lip to prevent 100mm PVC from bottoming out.

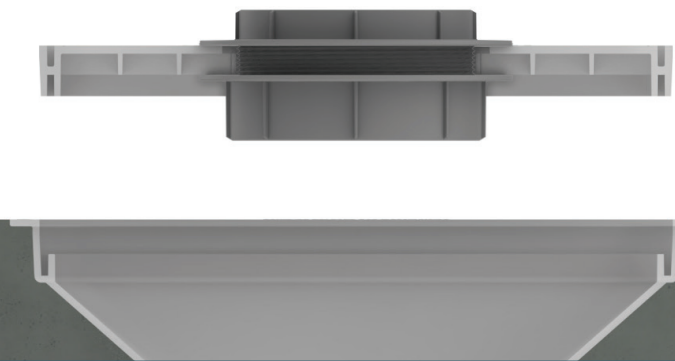
ALWAYS install the Cyclone Sleeve as depicted (pipe sleeve above and locking ring below) otherwise it will not work.



STEP 8

Fix the Cyclone Sleeve into the lid using a plumbing primer and cement suitable for jointing ABS to ABS (AS3879 compliant).

Apply plumbing primer and cement to both the inner and outer threads of the Cyclone Sleeve as well as around the opening on the top of the lid.



STEP 9

Fix the lid into the Cyclone using a plumbing primer and cement suitable for jointing ABS to ABS (AS3879 compliant).

Allow for adequate curing time as per plumbing primer and cement product instructions.



INSTALLATION STEPS

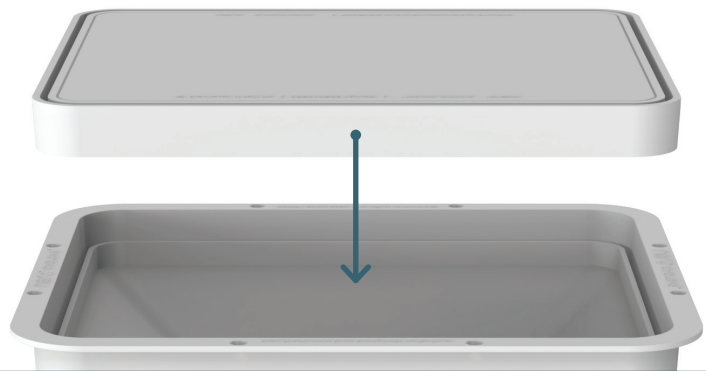
CYCLONE INSTALLATION GUIDE

SUSPENDED SUBFLOOR APPLICATION

STEP 1

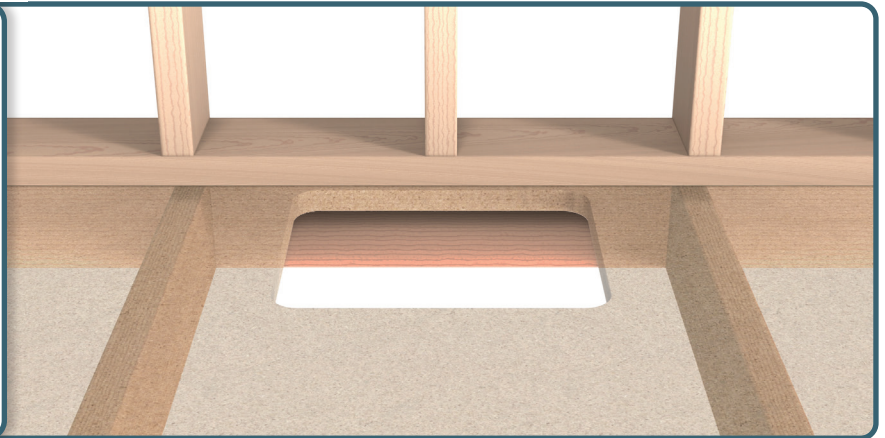
Place the Cyclone lid into the body. **DO NOT** permanently fix using plumbing primer and cement.

The lid will need to be removed later for installation of the Cyclone Sleeve. Placing the lid into the body now will ensure an accurate fit within the substrate.



STEP 2

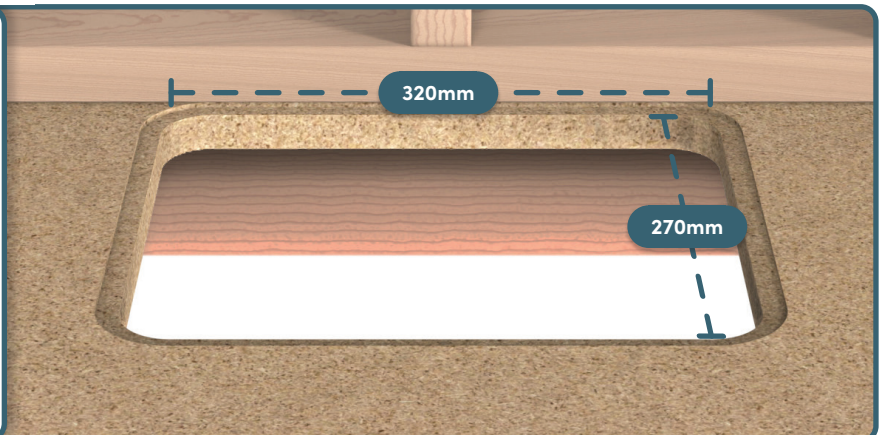
Create an opening in the substrate above the nominated position for the drainage system. Be sure to avoid all structural floor joists and beams as these should not be cut or modified in any way.



STEP 3

The opening in the substrate should measure 320mm by 270mm. Dry fit the Cyclone and make any necessary adjustments to achieve a snug fit.

Use a router to create a recess around the opening measuring 12mm wide by 3mm deep. This will allow the Cyclone to sit flush with the surface of the substrate.



STEP 4

Apply a continuous bead of sealant within the recess around the opening and install the Cyclone into the substrate.

Press firmly around the fixing flange ensuring the Cyclone is sitting flush and level with the substrate.



STEP 5

Using eight-gauge stainless steel self-tapping timber screws (suitable for counter sunk applications) mechanically fix the Cyclone to the substrate.

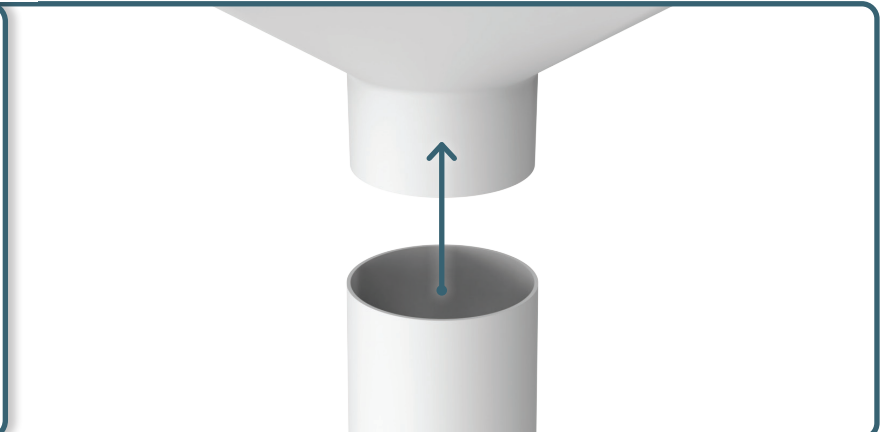
Be sure not to break through the counter sunk holes in the fixing flange. All sealant should be smoothed over and any excess should be discarded.



STEP 6

Connect the drainage system to the Cyclone using a plumbing primer and cement suitable for jointing ABS to PVC (AS3879 compliant).

Allow for adequate curing time as per plumbing primer and cement product instructions.



INSTALLATION STEPS

CYCLONE INSTALLATION GUIDE

SUSPENDED SUBFLOOR APPLICATION

STEP 7

Mark where the connection is required on the lid and drill a pilot hole using a 5.5mm drill bit in the centre of the marking.



STEP 8

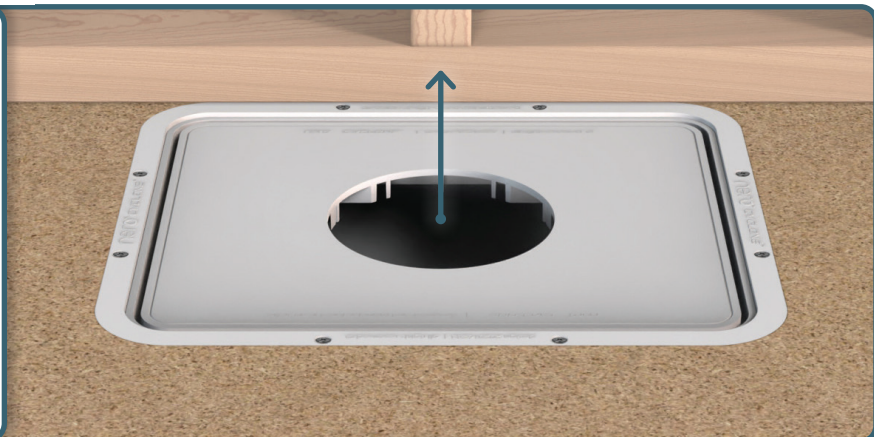
Use a 133mm hole saw to make an opening in the lid. Take care not to drop the lid cut-out into the Cyclone.

Use a deburring tool to clean the rough edges around the opening in the lid.



STEP 9

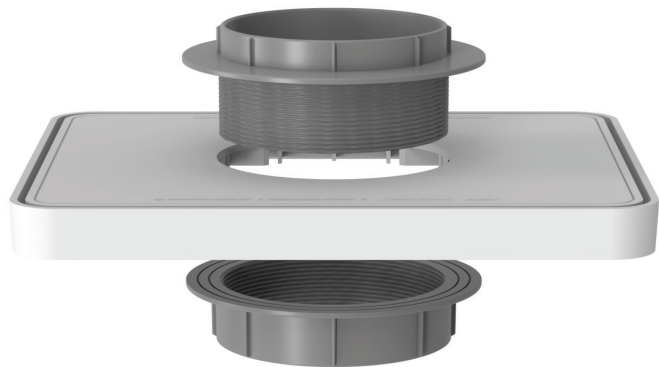
Lift the lid out of the body of the Cyclone. Carefully reach through and apply force around the opening until the lid is free.



STEP 10

The Cyclone Sleeve is designed with an internal taper and stop-lip to prevent 100mm PVC from bottoming out.

ALWAYS install the Cyclone Sleeve as depicted (pipe sleeve above and locking ring below) otherwise it will not work.



STEP 11

Fix the Cyclone Sleeve into the lid using a plumbing primer and cement suitable for jointing ABS to ABS (AS3879 compliant).

Apply plumbing primer and cement to both the inner and outer threads of the Cyclone Sleeve as well as around the opening on the top of the lid.

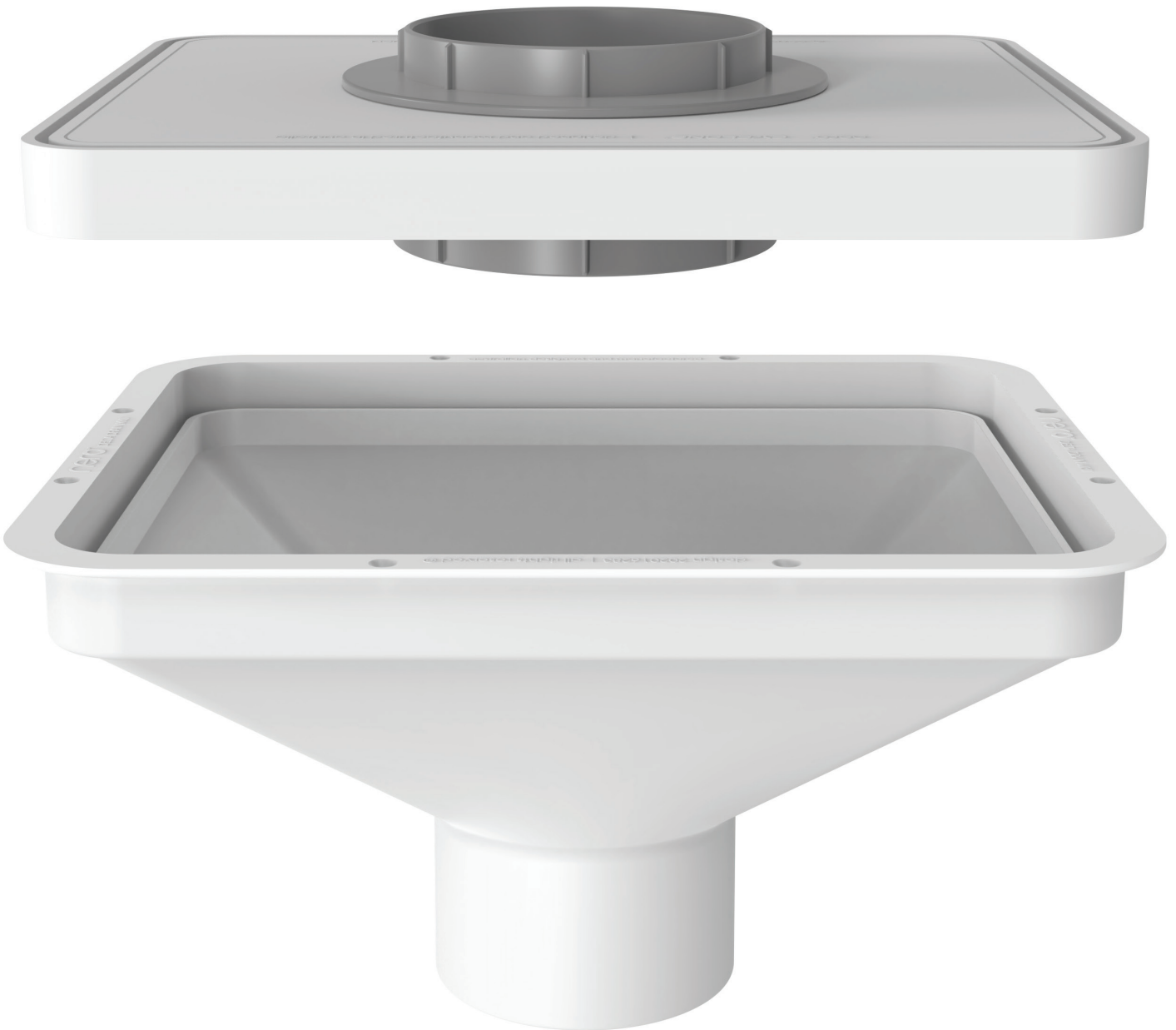


STEP 12

Fix the lid into the Cyclone using a plumbing primer and cement suitable for jointing ABS to ABS (AS3879 compliant).

Allow for adequate curing time as per plumbing primer and cement product instructions.





CYCLONE™ INSTALLATION GUIDE