

Our impressive NERO<sup>TM</sup> Designer Drain oozes style and class. Its unique appearance & functionality has redefined the aesthetic and disposal access of water in modern showers. The interchangeable centre tray has 2 functions:

### Aesthetics

The centre tray may be tiled to match aesthetic finish of the shower base. Alternatively, there's the option by inserting either the polished or brushed finished Stainless Steel Trays.

### Maintenance

For easy access, simply remove centre tray if water pipe requires servicing.

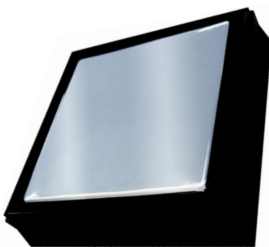
### Benefits & Features

- Available in Black / Grey / White
- Can be fitted to new & existing showers
- Available in 100 x 100mm channelled modules
- Easy access, removable centre tray if servicing required
- Three way universal pipe system accommodates 50mm, 88mm & 100mm water pipes all in one
- Multiple finish centre tray finishes to match aesthetic finish of shower base include:

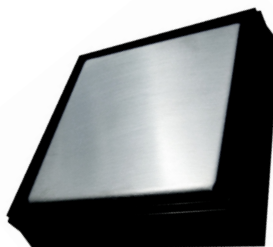


*(Available in Black / Grey / White)*

*(Available in 50mm, 80mm & 100mm water pipes)*



**Stainless Steel - Polished**



**Stainless Steel - Brushed**

NERO Designer Drains are designed & manufactured in Australia using ABS, industry approved plastics.



Demtech Australia Pty Ltd  
P.O. Box 4535 Knox City  
Centre VIC 3152

info@demtech.com.au  
Technical Support: 1300 300 090

Nero is a Registered Trademark - All Rights Reserved

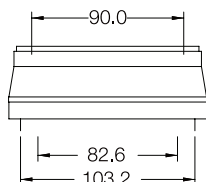
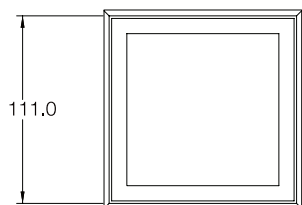
## PRODUCT

Designer Drain

## MATERIALS

ABS, industry approved plastic

## DIMENSIONS



NERO LCF 80-50MM  
ADAPTER (OPTIONAL)

50mm

80mm

100mm



## APPLICATION

### For Installation of:

Toilet Pan, LCF (Leak Control Flange), Linear Water Gates, Baths, Spas, Pipes & Fittings.

## FEATURES

- Available in 100 x 100mm square
- Available in Black / Grey / White
- Robust & easy to remove Design Drain Lid
- Extra depth for water grates, leak control flanges
- Multiple lid options: Stainless Steel - Brushed / Polished / Tiled

## TECHNICAL BENEFITS

- 100% leak proof
- ABS & UV stabilised
- Water Mark Approved AS 2887 WM-22401
- Non Corrosive / Blockages & back-flow
- Suitable for Linear Grate Systems, leak control flanges, toilet pans, pipes & fittings

## ASSEMBLY

Installation is simple – once the Sleeve is sealed into position using polyurethane sealant, the Grommet slides into the Sleeve. Water pipes / grate outlets / flange slides easily into the Grommet without any aid ensuring a watertight seal is achieved.

**Designer Drain**

*(Example)*

**Grommet**

**Sleeve**

**P.U. Sealant**

*(Polyurethane)*

**Delta Drain**

